



# SALLIE MAE

ABS Investor Presentation

August 2015



## Forward-Looking Statements and Disclaimer

### Cautionary Note Regarding Forward-Looking Statements

The following information is current as of August 24, 2015 (unless otherwise noted) and should be read in connection with the press release of SLM Corporation (the "Company") announcing its financial results for the quarter ended June 30, 2015, and the Form 10-Q for the quarter ended June 30, 2015 (filed with the Securities Exchange Commission ("SEC") on July 22, 2015) and subsequent reports filed with the SEC.

This Presentation contains "forward-looking" statements and information based on management's current expectations as of the date of this presentation. Statements that are not historical facts, including statements about the Company's beliefs, opinions or expectations and statements that assume or are dependent upon future events, are forward-looking statements. Forward-looking statements are subject to risks, uncertainties, assumptions and other factors that may cause actual results to be materially different from those reflected in such forward-looking statements. These factors include, among others, the risks and uncertainties set forth in Item 1A "Risk Factors" and elsewhere in the Company's Annual Report on Form 10-K for the year ended Dec. 31, 2014 (filed with the SEC on Feb. 26, 2015) and subsequent filings with the SEC; increases in financing costs; limits on liquidity; increases in costs associated with compliance with laws and regulations; changes in accounting standards and the impact of related changes in significant accounting estimates; any adverse outcomes in any significant litigation to which the Company is a party; credit risk associated with the Company's exposure to third parties, including counterparties to the Company's derivative transactions; and changes in the terms of education loans and the educational credit marketplace (including changes resulting from new laws and the implementation of existing laws). The Company could also be affected by, among other things: changes in its funding costs and availability; reductions to its credit ratings; failures or breaches of its operating systems or infrastructure, including those of third-party vendors; damage to its reputation; failures or breaches to successfully implement cost-cutting and restructuring initiatives and adverse effects of such initiatives on the Company's business; risks associated with restructuring initiatives; changes in the demand for educational financing or in financing preferences of lenders, educational institutions, students and their families; changes in law and regulations with respect to the student lending business and financial institutions generally; changes in banking rules and regulations, including increased capital requirements; increased competition from banks and other consumer lenders; the creditworthiness of customers; changes in the general interest rate environment, including the rate relationships among relevant money-market instruments and those of earning assets versus funding arrangements; rates of prepayment on the loans made by the Company and its subsidiaries; changes in general economic conditions and the Company's ability to successfully effectuate any acquisitions; and other strategic initiatives. The preparation of the Company's consolidated financial statements also requires management to make certain estimates and assumptions including estimates and assumptions about future events. These estimates or assumptions may prove to be incorrect. All forward-looking statements contained in this Presentation are qualified by these cautionary statements and are made only as of the date of this Presentation. The Company does not undertake any obligation to update or revise these forward-looking statements to conform such statements to actual results or changes in its expectations.

The Company reports financial results on a GAAP basis and also provides certain core earnings performance measures. The difference between the Company's "Core Earnings" and GAAP results for the periods presented were the unrealized, mark-to-market gains/losses on derivative contracts. These are recognized in GAAP but not in "Core Earnings" results. The Company provides "Core Earnings" measures because this is what management uses when making management decisions regarding the Company's performance and the allocation of corporate resources. The Company's "Core Earnings" are not defined terms within GAAP and may not be comparable to similarly titled measures reported by other companies.

For additional information, see "Management's Discussion and Analysis of Financial Condition and Results of Operations – GAAP Consolidated Earnings Summary-Core Earnings" in the Company's Quarterly Report on Form 10-Q for the quarter ended June 30, 2015 for a further discussion and for a complete reconciliation between GAAP net income and core earnings.

**Disclaimer.** A significant portion of the historical data relating to historical Smart Option Student Loan performance used to prepare certain of these materials was provided to the company by Navient Corporation ("Navient") pursuant to a Data Sharing Agreement executed in connection with the Spin-Off as hereinafter defined. Under the Data Sharing Agreement, Navient makes no representations or warranties to the Company concerning the accuracy and completeness of information that they provided. Sallie Mae Bank has not independently verified, and is not able to verify, the accuracy or completeness of the data provided under the agreement or of Navient's representations and warranties. Although we have no reason to believe that the data used to prepare the tabular and graphic presentations in this document as a whole, is materially inaccurate or incomplete, and have assumed that the data provided by Navient under the Data Sharing Agreement as a whole to be materially accurate and complete, neither the Company nor any person on its behalf has independently verified the accuracy and completeness of such data.



Sallie Mae Bank



## The Sallie Mae Brand



- ▶ #1 saving, planning and paying for education company with 40-years of leadership in the education lending market
- ▶ Top ranked brand: 6 out of 10 consumers of education finance recognize the Sallie Mae brand
- ▶ Industry leading market share in private education lending: 54% market share<sup>(1)</sup>
- ▶ Over 2,400 actively managed university relationships across the U.S.
- ▶ Complementary consumer product offerings
- ▶ Over one million long-term engaged customers across the Sallie Mae brands

(1) Source: MeasureOne CBA Report as of June 2015

## Sallie Mae Summary

- Leading private education loan franchise
- Conservative credit and funding
- Expanding consumer finance product suite

### Strategic Overview

- Private Education Loan - Originator and Servicer
- Deposits -
- Upromise Rewards -
- Credit Card -

### Key Businesses

- National sales and marketing
- Largest salesforce in the industry
- Specialized underwriting capability
- Capital markets expertise

### Competitive Advantage

### Balance Sheet

- (\$B as of 6/30/15)
- Assets 12.9 -
  - FFELP Loans 1.2 -
  - Private Loans 9.2 -
  - Deposits 10.3 -
  - Preferred Equity 0.6 -
  - Tangible Common Equity 1.4 -

## Sallie Mae Highlights

- ▶ Over one year since legal separation from Navient on April 30, 2014
- ▶ Completed the roll out of independent servicing and customer support capabilities October 13, 2014
- ▶ Generated Earnings of \$91 million in Q2 2015 and \$139 million YTD
- ▶ Originated \$4.1 billion of high quality Private Education Loans in 2014 (+7% vs. 2013), \$2.0 billion in 2015 YTD (+8% vs. 2014 YTD)
- ▶ Grew Private Education Loan portfolio 24% from Q2 2014 to Q2 2015
- ▶ Completed a second quarter 2015 loan sale at a pre-tax premium of 10.4%
- ▶ Completed the first term funding securitization in the third quarter 2015

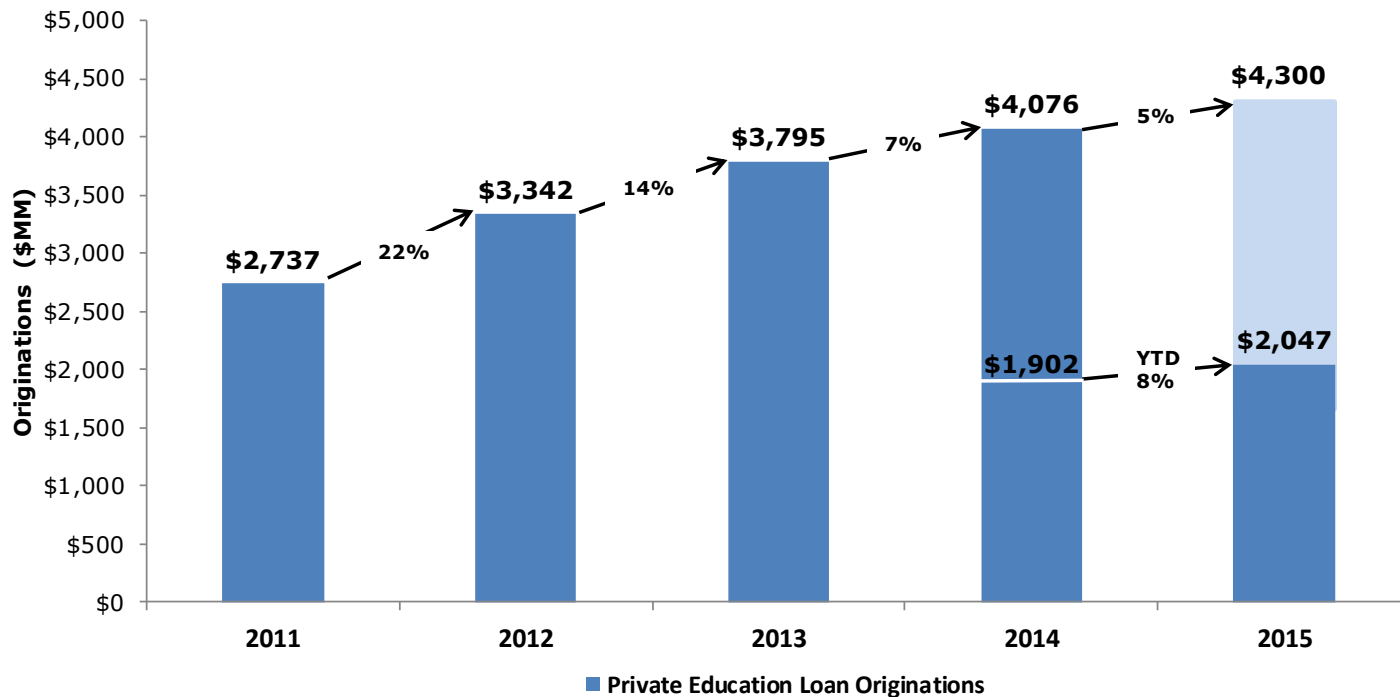
## Sallie Mae's Smart Option Loan Product Overview

- ▶ The Smart Option loan product was introduced by Sallie Mae in 2009
- ▶ The Smart Option loan program consists of:
  - ▶ Smart Option Interest Only loans - require full interest payments during in-school, grace, and deferment periods
  - ▶ Smart Option Fixed Pay loans - require \$25 fixed payments during in-school, grace, and deferment periods
  - ▶ Smart Option Deferred loans – do not require payments during in-school and grace periods
- ▶ Variable rate loans indexed to LIBOR, or fixed rate
- ▶ Smart Option payment option may not be changed after selected at origination
- ▶ Underwritten using proprietary credit score model
- ▶ Marketed primarily through the school channel and also directly to consumers, with all loans certified by and disbursed directly to schools

Smart Option Loan Program	
Origination Channel	School
Typical Borrower	Student
Typical Co-signer	Parent
Typical Loan	\$10,000 avg orig bal, 5 to 15 yr term, in-school payments of interest only, \$25 fixed or fully deferred
Origination Period	March 2009 to present
Certification and Disbursement	School certified and school disbursed
Borrower Underwriting	FICO, custom credit score model, and judgmental underwriting
Borrowing Limits	\$200,000
Current ABS Criteria	For-Profit; FICO ≥ 670 Not-for-Profit; FICO ≥ 640
Historical Risk-Based Pricing	L + 2% to L + 14%
Dischargeable in Bankruptcy	No <sup>(1)</sup>
Additional Characteristics	▶ Made to students and parents primarily through college financial aid offices to fund 2-year, 4-year and graduate school college tuition, room and board
	▶ Also available on a limited basis to students and parents to fund non-degree granting secondary education, including community college, part time, technical and trade school programs
	▶ Both Title IV and non-Title IV schools

(1) Private education loans are typically non-dischargeable in bankruptcy, unless a borrower can prove that repayment of the loan would impose an "undue hardship".

## High Quality Private Student Loan Originations Growth

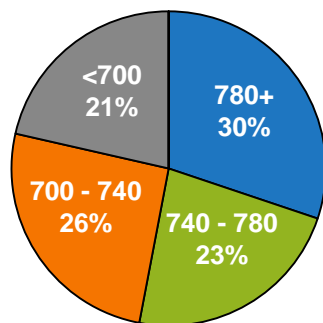


<u>Originations Statistics (\$)</u>	<u>2011</u>	<u>2012</u>	<u>2013</u>	<u>2014</u>	<u>Q2 2014</u>	<u>Q2 2015</u>
% Cosigned	91%	90%	90%	90%	90%	90%
% In School Payment	73%	58%	56%	56%	52%	52%
Average Originated FICO	748	746	745	749	745	747



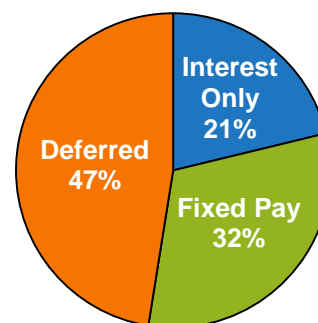
## High Quality Private Education Loan Portfolio

Customer FICO at Origination



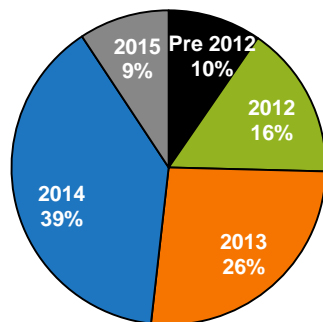
Weighted Average FICO: 746

Smart Option Payment Type



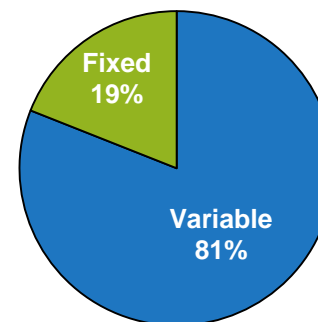
Smart Option Loans: \$8.9bn

Portfolio by Originations Vintage



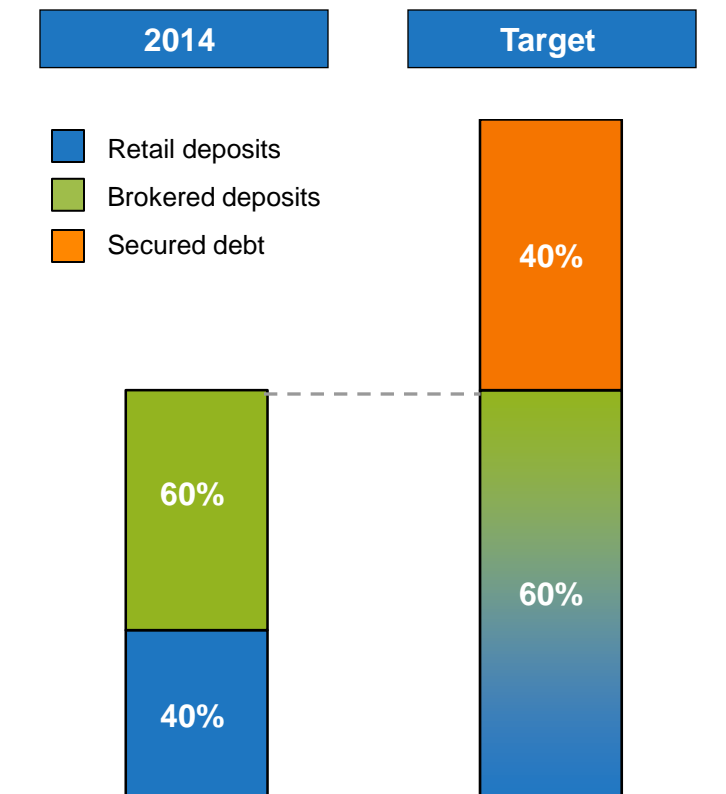
Weighted Average Age of Loan: ~1.7 years

Portfolio Interest Rate Type



## Conservative Funding Approach

- ▶ **Low cost deposit base with no branch overhead**
  - 90% of retail deposits are savings accounts
  - Brokered deposits used as alternative funding source
- ▶ **Term funding / securitizations will augment deposit funding for future growth**
  - Experienced capital markets team
  - Capacity to securitize \$2 – \$3bn of private education loans
  - Completed term funding securitization in the third quarter 2015
- ▶ **Multi-year revolving conduit facility**
  - Provides seasonal loan funding and backup liquidity
  - \$750mm conduit with 1-year revolving term and an additional 1-year amortization term provided by consortium of banks
- ▶ **Whole loan sales used to manage balance sheet growth**
  - Targeting \$1 – \$2bn of loan sales annually
- ▶ **Substantial liquidity portfolio**
  - \$1.3bn of on-balance sheet cash as of 6/30/15





## Sallie Mae Bank vs. Legacy SLM Private Education Loan ABS Summary

	Legacy SLM												Navient			Sallie Mae Bank		
	11-A	11-B	11-C	12-A	12-B	12-C	12-D	12-E	13-A	13-B	13-C	14-A	14-A	15-A	15-B	14-A	15-A	15-B
Total Bond Amount (\$mil)	562	825	721	547	891	1,135	640	976	1,108	1,135	624	676	664	689	700	382	704	714
Initial AAA Enhancement (%)	21%	18%	24%	27%	26%	25%	25%	21%	26%	22%	28%	24%	30%	32%	36%	21%	23%	22%
Initial Class B Enhancement (%)	--	--	--	--	--	--	--	--	15%	13%	20%	15%	22%	23%	--	12%	13%	13%
Loan Program (%)																		
Signature/Law/MBA/Med	88%	91%	71%	61%	48%	43%	37%	35%	26%	29%	26%	19%	26%	27%	52%	0%	0%	0%
Smart Option	--	--	10%	20%	30%	40%	45%	48%	63%	63%	64%	63%	50%	50%	--	100%	100%	100%
Consolidation	0%	0%	7%	6%	9%	5%	5%	5%	3%	5%	0%	6%	9%	2%	8%	0%	0%	0%
Direct to Consumer	9%	6%	12%	12%	12%	12%	12%	12%	8%	3%	10%	12%	15%	21%	26%	0%	0%	0%
Career Training	<u>3%</u>	<u>3%</u>	<u>0%</u>	<u>1%</u>	<u>1%</u>	<u>0%</u>	<u>0%</u>	<u>0%</u>	<u>0%</u>	<u>0%</u>	<u>0%</u>	<u>0%</u>	<u>0%</u>	<u>0%</u>	<u>13%</u>	<u>0%</u>	<u>0%</u>	<u>0%</u>
Total	100%	100%	100%	100%	100%	100%	100%	100%	100%	100%	100%	100%	100%	100%	100%	100%	100%	100%
Loan Status (%) <sup>(1)</sup>																		
School, Grace, Deferment	55%	55%	45%	37%	38%	40%	39%	44%	59%	62%	63%	49%	46%	24%	9%	91%	79%	78%
P&I Repayment	43%	43%	52%	60%	60%	57%	59%	54%	39%	36%	36%	50%	53%	68%	89%	9%	20%	21%
Forbearance	2%	3%	2%	2%	2%	3%	2%	2%	2%	2%	1%	1%	1%	8%	2%	0%	2%	1%
Wtd Avg Term to Maturity (Mo.)	192	189	182	171	164	151	144	148	144	146	143	150	161	155	157	140	133	130
% Loans with Cosigner	72%	75%	71%	75%	77%	79%	80%	80%	80%	80%	81%	82%	79%	80%	64%	93%	92%	92%
% Loans with No Cosigner	28%	25%	29%	25%	23%	21%	20%	20%	20%	20%	19%	18%	21%	20%	36%	7%	8%	8%
Wtd Avg FICO at Origination	737	736	733	735	736	737	740	733	741	740	740	742	739	731	730	747	747	746
Wtd Avg Recent FICO at Issuance	723	722	720	724	726	728	730	722	733	734	733	741	737	714	726	745	744	741
WA FICO (Cosigner at Origination)	747	745	744	745	745	745	748	741	751	750	749	750	748	738	742	750	750	749
WA FICO (Cosigner at Rescored)	736	731	734	732	734	735	738	728	745	746	745	750	746	724	739	748	748	745
WA FICO (Borrower at Origination)	709	710	704	705	705	707	710	702	703	702	705	707	707	701	704	708	714	715
WA FICO (Borrower at Rescored)	690	695	688	700	700	702	698	696	683	684	682	701	707	672	704	701	702	699
Variable Rate Loans	100%	100%	100%	100%	100%	100%	100%	100%	100%	100%	100%	100%	89%	97%	100%	85%	82%	82%
Wtd Avg Annual Borrower Interest Rate	7.75%	7.45%	6.61%	7.04%	7.23%	7.38%	7.43%	7.70%	6.88%	6.89%	7.13%	6.85%	6.89%	7.60%	5.82%	7.82%	8.21%	8.21%

(1) Smart Option loans considered in 'P&I Repayment' only if borrowers are subject to full principal and interest payments on the loan.



## Sallie Mae Bank ABS Structures

	<b><u>SMB 2015-B</u></b>																																												
Size	\$630.80MM <sup>(1)</sup>																																												
Pricing Date	July 23, 2015																																												
Collateral	Smart Option Private Education Loans																																												
Servicer	Sallie Mae Bank																																												
Overcollateralization <sup>(2)</sup>	13%																																												
Prepayment Speed <sup>(3)</sup>	4%																																												
Tranche Structure	<table><tr><th></th><th>Amt</th><th></th><th></th><th></th></tr><tr><th>Class</th><th>(\$mm) <sup>(1)</sup></th><th>Mdy's</th><th>WAL</th><th>Pricing</th></tr><tr><td>A-1</td><td>225.15</td><td>Aaa</td><td>1.50</td><td>1mL +80</td></tr><tr><td>A-2a</td><td>182.40</td><td>Aaa</td><td>5.46</td><td>IntS +120</td></tr><tr><td>A-2b</td><td>85.50</td><td>Aaa</td><td>5.46</td><td>1mL +130</td></tr><tr><td>A-3</td><td>71.25</td><td>Aaa</td><td>8.40</td><td>1mL +180</td></tr><tr><td>B</td><td>66.50</td><td>Aa3</td><td>9.67</td><td>IntS +235</td></tr><tr><td>C</td><td>Retained</td><td>A3</td><td>10.68</td><td>N/A</td></tr></table>						Amt				Class	(\$mm) <sup>(1)</sup>	Mdy's	WAL	Pricing	A-1	225.15	Aaa	1.50	1mL +80	A-2a	182.40	Aaa	5.46	IntS +120	A-2b	85.50	Aaa	5.46	1mL +130	A-3	71.25	Aaa	8.40	1mL +180	B	66.50	Aa3	9.67	IntS +235	C	Retained	A3	10.68	N/A
	Amt																																												
Class	(\$mm) <sup>(1)</sup>	Mdy's	WAL	Pricing																																									
A-1	225.15	Aaa	1.50	1mL +80																																									
A-2a	182.40	Aaa	5.46	IntS +120																																									
A-2b	85.50	Aaa	5.46	1mL +130																																									
A-3	71.25	Aaa	8.40	1mL +180																																									
B	66.50	Aa3	9.67	IntS +235																																									
C	Retained	A3	10.68	N/A																																									
WA Borrower Interest Rate	8.21%																																												
WA FICO at Issuance	741																																												
% Loans with Cosigner	92%																																												
Variable Rate Loans	82%																																												

<b><u>SMB 2015-A</u></b>				
\$704MM				
April 15, 2015				
Smart Option				
Private Education Loans				
Sallie Mae Bank				
13%				
4%				
<b>Class</b>	<b>Amt (\$mm)</b>	<b>Mdy's</b>	<b>WAL</b>	<b>Pricing</b>
A-1	263.00	Aaa	1.75	1mL +60
A-2a	164.00	Aaa	5.90	IntS +90
A-2b	82.00	Aaa	5.90	1mL +100
A-3	70.00	Aaa	8.50	1mL +150
B	75.00	Aa3	9.75	IntS +220
C	50.00	A3	10.79	IntS +295
8.21%				
744				
92%				
82%				

<sup>(1)</sup> Represents offered amount. SMB retained 5% of Classes A through B and all of Class C (\$50mm). Total bond size was \$714mm.

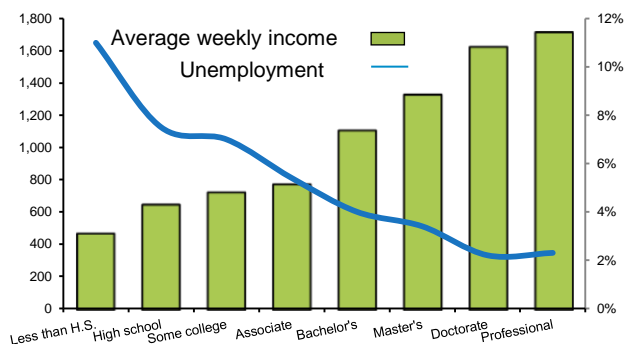
<sup>(2)</sup> Overcollateralization for Class A & B bonds

<sup>(3)</sup> Estimated based on a variety of assumptions concerning loan repayment behavior. Actual average life may vary significantly from estimates.

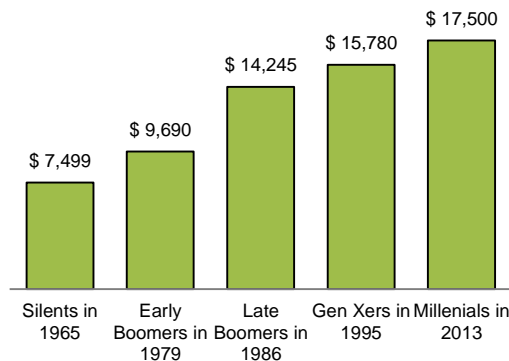
## Private Education Loan Market Background

## Higher Education Value Proposition

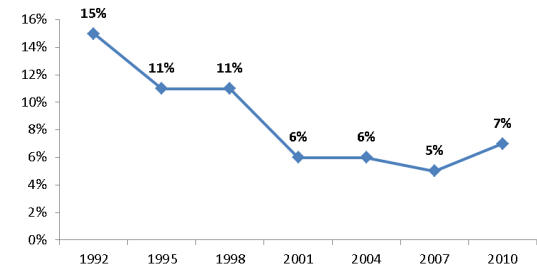
Relationship Between Higher Education, Income and Employment<sup>(1)</sup>



Incremental Earnings From a College Degree Has Increased For Generations<sup>(2)</sup>



Payment to Income Ratio<sup>(4)</sup>



### Key Statistics

- ▶ The unemployment rate for 25 to 34 year-olds with four-year college degrees was 2.1%, compared to 8.4% for high school graduates<sup>(1)</sup>
- ▶ 60% of students graduate with student loans<sup>(3)</sup>
- ▶ 69% of student loan borrowers have debt balances less than \$25,000 and 4% have balances above \$100,000 (average borrowings of \$27,300) <sup>(3)</sup>
- ▶ The average payment-to-income ratio declined from 15% in 1992 to 7% in 2010<sup>(4)</sup>

(1) Source: U.S. Bureau of Labor Statistics- March 2015

(2) Source: PEW Research Center- The Rising Cost of Not Going to College February 2014

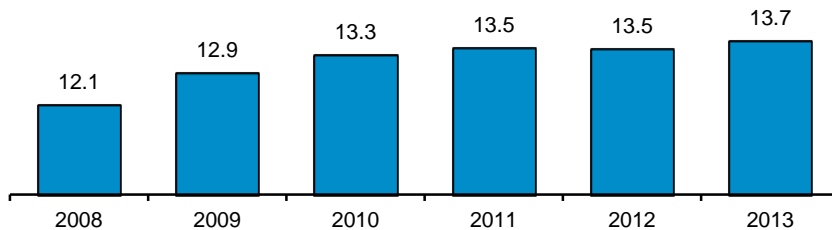
(3) Source: Trends in College Pricing.© 2014 The College Board, www.collegeboard.org, U.S. Department of Education 2014

(4) Source: Brown Center on Education Policy at Brookings: Is a Student Loan Crisis on the Horizon -Released June 2014

## Favorable Student Loan Market Trends

### Enrollment at Four-Year Degree Granting Institutions<sup>(1)</sup>

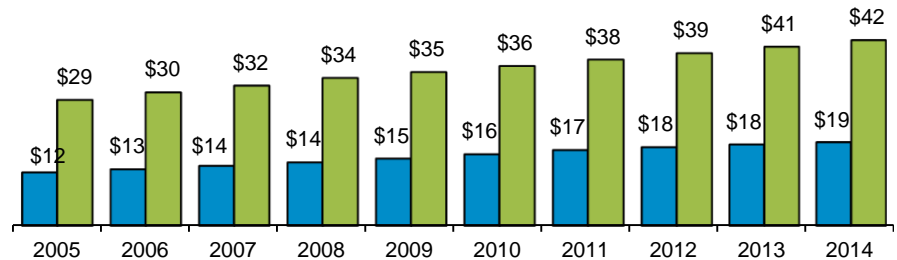
(millions)



### Annual Cost of Education<sup>(2)</sup>

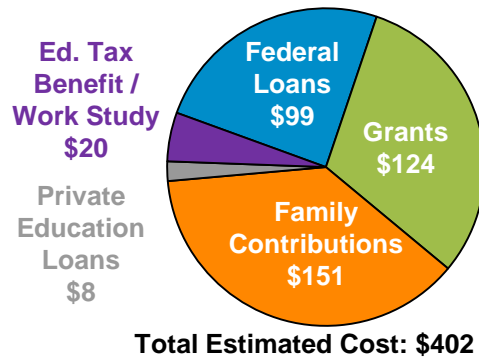
(thousands)

Public Private



### Estimated Total Cost of Education – 2014 / 2015 AY<sup>(3)</sup>

(billions)

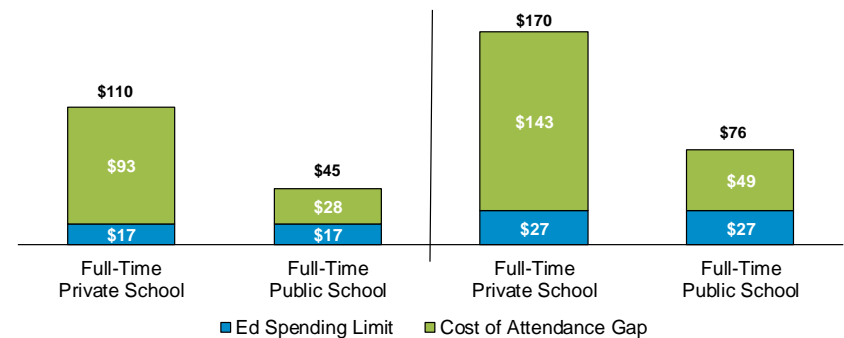


### Cost of College (Based on a Four-Year Term)<sup>(4)</sup>

(thousands)

AY 2004-2005

AY 2014-2015



(1) Source: U.S. Department of Education, National Center for Education Statistics, Projections of Education Statistics to 2022

(2) Source: Trends in College Pricing. © 2014 The College Board, www.collegeboard.org. Note: Academic years, average published tuition, fees, room and board charges at four-year institutions; enrollment-weighted

(3) "Total post-secondary education spend" is estimated by Sallie Mae by determining the full-time equivalents for both graduates and undergraduates and multiplying by estimated total per person cost of attendance for each school type. In doing so, we utilize information from the U.S. Department of Education, College Board, MeasureOne, National Student Clearinghouse and Company Analysis. Other sources for these data points also exist publicly and may vary from our computed estimates.

(4) Source: Trends in College Pricing. © 2014 The College Board, www.collegeboard.org, U.S. Department of Education 2014



## Sallie Mae Bank Smart Option Private Education Loans

### FFELP vs. Sallie Mae Bank Smart Option Private Education Loan Comparison

	<u>FFELP Stafford Loans</u>	<u>Sallie Mae Bank Smart Option Private Education Loans<sup>(1)</sup></u>
<b>Borrower</b>	Student	Student or Parent
<b>Co-signer</b>	None	Typically a parent
<b>Lender</b>	Eligible banks and private lenders under FFELP	Banks and other private sector lenders
<b>Guarantee</b>	97-100% of principal and interest by the U.S. Department of Education	<u>Not</u> guaranteed by the U.S. Government or any other entity
<b>Interest Subsidy/Special Allowance Payments</b>	Paid by the U.S. Department of Education	Not Applicable
<b>Underwriting</b>	Borrower must have no outstanding student loan defaults or bankruptcy	Consumer credit underwriting, with minimum FICO, custom credit score model, and judgmental underwriting
<b>Pricing</b>	Fixed or floating rate depending on origination year and loan program	Risk-based, variable rate indexed to LIBOR or fixed rate
<b>Maximum Amount per Year</b>	\$5,500-\$7,500 for dependent student, based on year in school	Up to the full cost of education, less grants and federal loans
<b>Repayment Term</b>	10 years, with repayment deferred until after graduation	5 to 15 years, may pay interest or a \$25 fixed payment while in school, or may be deferred until after graduation
<b>Collections</b>	Based on prescribed U.S. Dept of Education regulations	Typical consumer loan collections activities, managed independent of FFELP
<b>Deferment</b>	Permitted for a variety of reasons, including economic hardship	Granted to students who return to school, and are involved in active military service
<b>Forbearance</b>	Permitted for a variety of reasons, including economic hardship	Typically granted for economic hardship, up to a maximum of 12 months
<b>Dischargeable in Bankruptcy</b>	No	No <sup>(2)</sup>

(1) Pertains to the Sallie Mae Smart Option loan product.

(2) Private education loans are typically non-dischargeable in bankruptcy, unless a borrower can prove that repayment of the loan would impose an "undue hardship".



## Collections, Charge-off and Recovery Policy

## Sallie Mae Bank Servicing Policy

Policy	Pre-Spin, Legacy SLM Serviced	Post-Spin, Sallie Mae Bank Serviced <sup>(1)</sup>
Delinquencies	All loans serviced by an affiliate of legacy SLM; loan owned by Sallie Mae Bank sold to legacy SLM after becoming 90+ days past due	Sallie Mae Bank collects delinquent loans thru charge-off, placing emphasis on returning loans to current status during early delinquency
Charge-offs	Loans serviced by legacy SLM charge off at 212+ days past due	Loans serviced by Sallie Mae Bank charge off at 120+ days past due
Recoveries	Post-charge off collections managed by legacy SLM; recoveries realized over 10+ years	Charged-off loans sold soon after charge-off; recoveries realized immediately <sup>(1)</sup>
Forbearance	Granted for 3 mo. intervals with a 12 month maximum, with fee	Granted for 3 mo. intervals with a 12 month maximum, no fee

### Sallie Mae Bank Forbearance Policy -

- ▶ First choice is always to collect a payment from the borrower or co-signer
- ▶ If payment is not possible, forbearance temporarily provides borrowers limited time to improve their ability to repay during temporary economic hardship
- ▶ The vast majority of loans do not use forbearance; those that do, remain in forbearance for less than 12 months

<sup>(1)</sup> Sallie Mae Bank intends to add third party collection agency management, account placement and other functionality necessary to manage charged-off loan collections internally. In the future, Sallie Mae expects to have the option of selling or internally managing collections of charged-off loans, and to utilize one or both of those strategies at any time based on market conditions.



## Sallie Mae Bank Collections

**Each customer is approached individually, and the account manager is educated and empowered to identify optimal resolution**

- ▶ Co-borrowers are contacted and collected with similar efforts as the primary borrower

**Sallie Mae Bank employs a front-loaded, stage based collections approach:**

- ▶ Early Stage Loan Collections (1 – 29 days delinquent as of the first of the month)
  - Calling activity begins as early as 1 cycle day behind (5 days past their due date in most instances)
  - Dialer based calling and automated messaging are leveraged for early delinquency
  - E-mail and letter campaigns complement calling efforts
- ▶ Mid-Stage Loan Collections (30 – 59 days delinquent as of the first of the month)
  - Continue early stage activities
  - Account is assigned to a collector's queue based on the delinquency and the type of loan. Collection campaign includes telephone attempts and manual & batch skip tracing
- ▶ Late Stage Loan Collections (60+ days delinquent as of the first of the month)
  - Continue both early and mid-stage activities
  - Tenured route management collectors and customized letter campaigns

**Cash collection is the primary focus, but a variety of tools are also available to collectors to aid in resolving delinquency:**

- Auto pay – Monthly payment made automatically, prior delinquency cleared with forbearance
- Three Pay – After three scheduled monthly payments are made, prior delinquency cleared with forbearance
- Term Extension – Extend term for monthly payment relief, enrolled after three qualifying payments
- Rate Reduction – Reduce rate for monthly payment relief, enrolled after three qualifying payments
- Rate Reduction with Term Extension – Reduced rate and extended term
- Additional programs are available when all other methods are not adequate

**Bankruptcy Collections Policy** – Collection activity stops if both parties on the loan file bankruptcy (borrower and cosigner); otherwise, collections can continue on the non-filing party

## Post-Default Recoveries

### Recovery Operations

- ▶ In the near term, Sallie Mae Bank plans to sell the majority of the charged-off loans to third parties following charge-off at 120+ days past due
  - Recoveries realized immediately
  - Practical and predictable economics
  - Manageable compliance and vendor oversight requirements
- ▶ Initial charged off loan sale occurred in December 2014
- ▶ Forward flow agreement with a “preferred” debt buyer in place through September 2015
  - High teens sales price for newly charged-off loans

**Sallie Mae Bank intends to add third party collection agency management, account placement and other functionality necessary to support charged-off loan collections internally**

- ▶ In the near future, Sallie Mae Bank expects to have the option of selling or internally managing collections of charged off loans, and to utilize one or both of those strategies at any time based on market conditions

## Historical Smart Option Loan Performance



## Important Information Regarding Historical Loan Performance Data

On April 30, 2014 (the "Spin-Off Date"), the former SLM Corporation legally separated (the "Spin-Off") into two distinct publicly traded entities: an education loan management, servicing and asset recovery business called Navient Corporation ("Navient"), and a consumer banking business called SLM Corporation. SLM Corporation's primary operating subsidiary is Sallie Mae Bank. We sometimes refer to SLM Corporation, together with its subsidiaries and its affiliates, during the period prior to the Spin-Off as "legacy SLM."

In connection with the Spin-Off, all private education loans owned by legacy SLM, other than those owned by its Sallie Mae Bank subsidiary as of the date of the Spin-Off, and all private education loan asset-backed securities ("ABS") trusts previously sponsored and administered by legacy SLM were transferred to Navient. As of the Spin-Off Date, Navient and its sponsored ABS trusts owned \$30.8 billion of legacy SLM's private education loan portfolio originated both prior to and since 2009. As of the Spin-Off Date, Sallie Mae Bank owned \$7.2 billion of private education loans, the vast majority of which were unencumbered Smart Option Student Loans originated since 2009.

### **Legacy SLM's Private Education Loan and ABS Programs Prior to the Spin-Off**

In 1989, legacy SLM began making private education loans to graduate students. In 1996, legacy SLM expanded its private education loan offerings to undergraduate students. Between 2002 and 2007, legacy SLM issued \$18.6 billion of private education loan-backed ABS in 12 separate transactions.

In 2008, in response to the financial downturn, legacy SLM revised its private education loan underwriting criteria, tightened its forbearance and collections policies, ended direct-to-consumer disbursements, and ceased lending to students attending certain for-profit schools. Legacy SLM issued no private education loan ABS in 2008.

In 2009, legacy SLM introduced its Smart Option Student Loan product and began underwriting private education loans with a proprietary custom credit score. The custom credit score included income-based factors, which led to a significant increase in the percentage of loans requiring a co-signer, typically a parent. The initial loans originated under the Smart Option Student Loan program (the "Interest Only SOSLs") were variable rate loans and required interest payments by borrowers while in school, which reduced the amounts payable over the loans' lives and helped establish repayment habits among borrowers. In 2010, legacy SLM introduced a second option for its Smart Option Student Loan customers, which required a \$25 fixed monthly payment while borrowers were in school (the "Fixed Pay SOSLs"). In 2011, legacy SLM introduced another option for its Smart Option Student Loan customers, which allowed borrowers to defer interest and principal payments until after a student graduates or separates from school (the "Deferred SOSLs"). In 2012, legacy SLM introduced a fixed rate loan option for its Interest Only, Fixed Pay and Deferred SOSLs. Borrowers must select which of these options they prefer at the time of loan origination and are not permitted to change those options once selected.

In 2011, legacy SLM included private education loans originated under the Smart Option Student Loan program in its ABS pools for the first time. Between 2011 and 2014, the mix of Smart Option Student Loans included in legacy SLM's private education loan ABS steadily increased as a percentage of the collateral pools, from 10% initially to 64% in later transactions.

### **Sallie Mae Bank's Private Education Loan and ABS Programs Post-Spin Off**

**Originations.** Following the Spin-Off, Sallie Mae Bank continued to originate loans under the Smart Option Student Loan program. As of December 31, 2014, it owned \$9.5 billion of private education loans, the vast majority of which were Smart Option Student Loans originated since 2009, and two-thirds of which were originated in 2013 and 2014. Navient ceased originating private education loans following the Spin-Off.

**Servicing.** Immediately prior to the Spin-Off, Sallie Mae Bank assumed responsibility for collections of delinquent loans on the vast majority of its Smart Option Student Loan portfolio. Following the Spin-Off Date, Navient continued to service all private education loans owned by the two companies on its servicing platform until October 2014, when servicing for the vast majority of Sallie Mae Bank's private education loan portfolio was transitioned to Sallie Mae Bank. Sallie Mae Bank now services and is responsible for collecting the vast majority of the Smart Option Student Loans it owns.

**Securitization and Sales.** In August 2014, Sallie Mae Bank sponsored its first private education loan ABS, SMB Private Education Loan Trust 2014-A (the "SMB 2014-A transaction"). Because this transaction occurred prior to the transfer of loan servicing from Navient to Sallie Mae Bank, Sallie Mae Bank acted as master servicer for the transaction and Navient as subservicer, and the loan pool is serviced pursuant to Navient servicing policies. Also in August 2014, Sallie Mae Bank sold Navient approximately \$800 million of performing Smart Option Student Loans. In April 2015, Sallie Mae Bank sponsored a second securitization and residual sale, SMB Private Education Loan Trust 2015-A, for which Sallie Mae Bank acted as servicer.

**Additional Information.** Prior to the Spin-Off, all Smart Option Student Loans were originated and initially held by Sallie Mae Bank, as a subsidiary of legacy SLM. Sallie Mae Bank typically then sold certain of the performing Smart Option Student Loans to an affiliate of legacy SLM for securitization. Additionally, on a monthly basis Sallie Mae Bank sold all loans that were over 90 days past due, in forbearance, restructured or involved in a bankruptcy to an affiliate of legacy SLM. As a result of this second practice, prior to the occurrence of the Spin-Off, historical performance data for Sallie Mae Bank's Smart Option Student Loan portfolio reflected minimal later stage delinquencies, forbearance or charge-offs.

Legacy SLM collected Smart Option Student Loans pursuant to policies that required loans be charged off after 212 days of delinquency. In April 2014, Sallie Mae Bank began collecting the vast majority of its Smart Option Student Loans pursuant to policies that required loans be charged off after 120 days of delinquency, in accordance with bank regulatory guidance. As a result of the various policies described above, it was not until recently that (a) a meaningful amount of Smart Option Student Loan charge-offs occurred in Sallie Mae Bank's portfolio, and (b) performance data on Sallie Mae Bank's owned Smart Option Student Loan portfolio became useful as a basis for evaluating historical trends for Smart Option Student Loans. For the reasons described above, much of Sallie Mae Bank's historical performance data does not reflect current collections and charge off practices and may not be indicative of the future performance of the Bank's Smart Option Student Loans. We do not believe the credit performance indicators for Sallie Mae Bank-owned and -serviced Smart Option Student Loans yet provide meaningful period-over-period comparisons.



## Important Information Regarding Historical Loan Performance Data (cont.)

### *Types of Smart Option Loan Portfolio Data*

The portfolio data we used in this report comes from two separate sources of information:

(1) Combined Smart Option Student Loan Portfolio Data for Legacy SLM, Navient and Sallie Mae Bank. Information in this category is presented on a combined basis for loans originated under the Smart Option Student Loan program, whether originated by Sallie Mae Bank when it was part of legacy SLM or by Sallie Mae Bank post Spin-Off, and regardless of whether the loan is currently held by an ABS trust, or held or serviced by Navient or Sallie Mae Bank. Data in this category is used in the tables below under the following headings:

- “Cumulative Defaults by P&I Repayment Vintage and Years in P&I Repayment” and
- “Cumulative Recovery Rate for Combined Charge Offs and Charge-Off Vintages Since 2010.”

This combined Smart Option Student Loan portfolio data provides insight into gross defaults of all Smart Option Student Loans since 2010, regardless of ownership or servicing standard. We believe historical loan performance data since 2010 is more representative of the expected performance of Smart Option Student Loans to be included in new Sallie Mae Bank trusts than data available for earlier periods. Data available for earlier periods includes a limited number of Smart Option Student Loan product types, a limited amount of loans in principal and interest repayment status, and limited periods of loan performance history.

**A significant portion of the combined Smart Option Student Loan performance data described in this category is provided to Sallie Mae Bank by Navient under a data sharing agreement executed in connection with the Spin-Off. This data sharing agreement expires in 2019. Under the data sharing agreement, Navient makes no representations or warranties to Sallie Mae Bank concerning the accuracy and completeness of information that it provided. Sallie Mae Bank has not independently verified, and is not able to verify, the accuracy or completeness of the data provided under the agreement.**

Loans contained in the combined Smart Option Student Loan portfolio category were serviced by legacy SLM prior to the Spin-Off, and by either Navient or Sallie Mae Bank after the Spin-Off. As noted above, loans serviced by legacy SLM and Navient were serviced pursuant to different policies than those loans serviced by Sallie Mae Bank after the Spin-Off. Specifically, legacy SLM charged off loans after 212 days of delinquency, and Navient has continued this policy. Sallie Mae Bank currently charges off loans after 120 days of delinquency. All loans included in the combined Smart Option Student Loan portfolio were serviced by legacy SLM pursuant to a 212-day charge off policy prior to the Spin-Off. Following the Spin-Off, a portion of the loans included in the combined Smart Option Student Loan portfolio data have been serviced by Navient pursuant to a 212-day charge off policy, and a portion have been serviced by Sallie Mae Bank pursuant to a 120-day charge off policy. As a result, future performance of loans serviced by Sallie Mae Bank may differ from the historical performance of loans reflected in this combined Smart Option Student Loan portfolio data.

(2) Legacy SLM Consolidated Smart Option Student Loan Portfolio Data prior to the Spin-Off Date, and Sallie Mae Bank-Only Smart Option Student Loan Data from and after the Spin-Off Date. Information in this category is presented (a) prior to the Spin-Off Date for Smart Option Student Loans owned or serviced by legacy SLM prior to the Spin-Off, and (b) from and after the Spin-Off Date for Smart Option Student Loans serviced by Sallie Mae Bank from and after the Spin-Off. Data in this category is used in the tables below under the following headings:

- |  |   |
|--|---|
| – “31-60 Day Delinquencies as a Percentage of Loans in P&I Repayment;”   | – “Forbearance as a Percentage of Loans in P&I Repayment and Forbearance;”      |
| – “61-90 Day Delinquencies as a Percentage of Loans in P&I Repayment;”   | – “Annualized Gross Defaults as a Percentage of Loans in P&I Repayment;”        |
| – “91-plus Day Delinquencies as a Percentage of Loans in P&I Repayment;” | – “Voluntary Constant Prepayment Rates by Origination Vintage and Product;” and |
|  | – “Total Constant Prepayment Rates by Origination Vintage and Product.”         |

This consolidated Smart Option Student Loan portfolio data provides insight into historical delinquencies, forbearance, defaults and prepayment rates specifically of the Smart Option Student Loans covered, regardless of the loans’ ownership at the time, or whether the loans serve as collateral for an ABS trust. We believe this data is currently the most relevant data available for assessing historical Smart Option Student Loan performance.

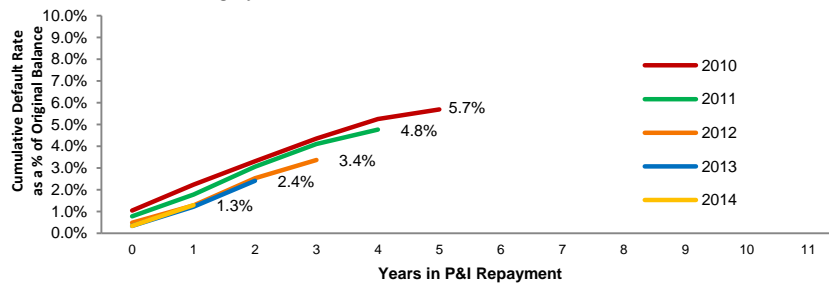
Loans owned or serviced by legacy SLM and contained in this consolidated Smart Option Student Loan portfolio category were serviced pursuant to legacy SLM servicing policies prior to the Spin-Off. Loans serviced by Sallie Mae Bank and contained in this consolidated Smart Option Student Loan portfolio were serviced pursuant to Sallie Mae Bank servicing policies since the Spin-Off. The servicing policies of legacy SLM were different than the servicing policies of Sallie Mae Bank. Specifically, legacy SLM charged off loans after 212 days of delinquency, while Sallie Mae Bank charges off loans after 120 days of delinquency in accordance with bank regulatory guidance. As a result, future performance of loans serviced by Sallie Mae Bank may differ from the historical performance of loans reflected in this consolidated Smart Option Student Loan portfolio data.

Any data or other information presented in the following report is for comparative purposes only, and is not to be deemed a part of any offering of securities.

## Smart Option Vintage Data: Cumulative Gross Default by Loan Type

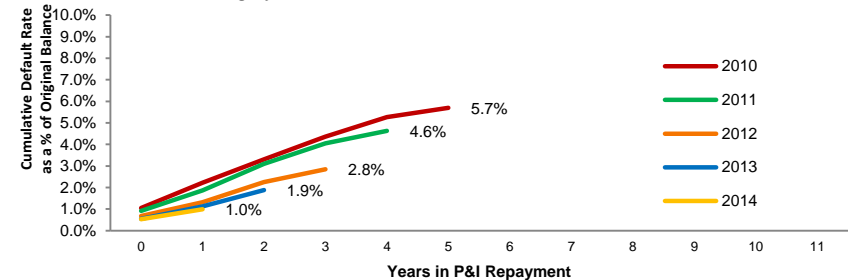
**Smart Option Student Loans - Serviced Portfolio: All Products**  
Cumulative Defaults by P&I Repayment Vintage  
and Years in P&I Repayment <sup>(1)</sup>

Data for Legacy SLM, Navient and Sallie Mae Bank Combined thru Present <sup>(2)</sup>



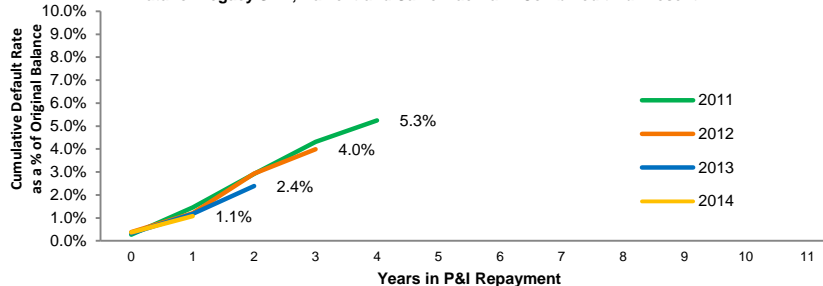
**Smart Option Student Loans - Serviced Portfolio: Interest Only**  
Cumulative Defaults by P&I Repayment Vintage  
and Years in P&I Repayment <sup>(1)</sup>

Data for Legacy SLM, Navient and Sallie Mae Bank Combined thru Present <sup>(2)</sup>



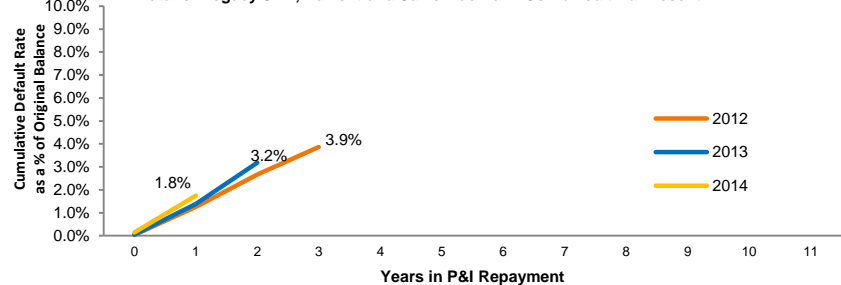
**Smart Option Student Loans - Serviced Portfolio: Fixed Pay**  
Cumulative Defaults by P&I Repayment Vintage  
and Years in P&I Repayment <sup>(1)</sup>

Data for Legacy SLM, Navient and Sallie Mae Bank Combined thru Present <sup>(2)</sup>



**Smart Option Student Loans - Serviced Portfolio: Deferred**  
Cumulative Defaults by P&I Repayment Vintage  
and Years in P&I Repayment <sup>(1)</sup>

Data for Legacy SLM, Navient and Sallie Mae Bank Combined thru Present <sup>(2)</sup>



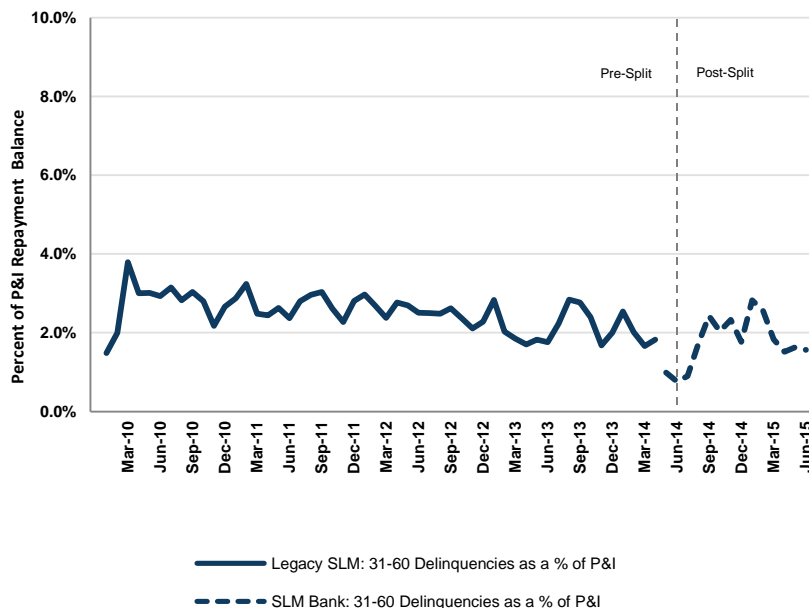
(1) Loans in 'P&I Repayment' includes only those loans for which scheduled principal and interest payments are due. Data as of June 30, 2015.

(2) Certain data used in the charts above was provided by Navient under a data sharing agreement. Sallie Mae Bank has not independently verified, and is not able to verify, the accuracy or completeness of the data provided under the agreement. Cumulative charge off rate calculations for the period ended June 30, 2015 include \$28.7 million of charged off loans sold to third parties prior to March 31, 2015 not included in previously reported cumulative charge off rate calculations. Inclusion of these charge offs contributed to the increase in cumulative charge off rates for the period ended June 30, 2015 over those previously reported for the period ended March 31, 2015.

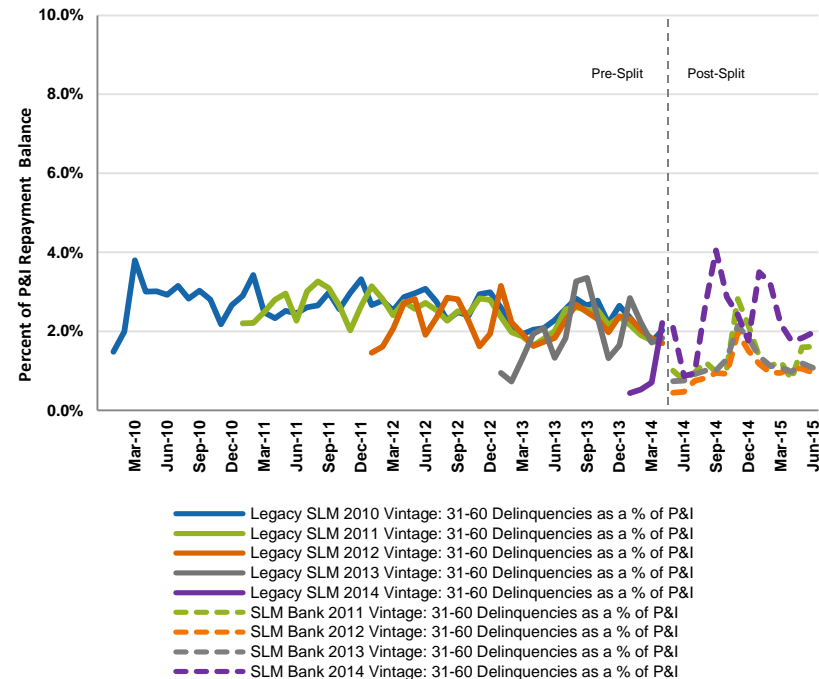


## Smart Option Serviced Portfolio: 31-60 Day Delinquencies

**Smart Option Student Loans - Serviced Portfolio**  
**31-60 Day Delinquencies as a % of Loans in P&I Repayment <sup>(1)</sup>**  
 Data for Legacy SLM thru April 30, 2014 and Sallie Mae Bank since May 1, 2014



**Smart Option Student Loans - Serviced Portfolio**  
**31-60 Day Delinquencies as a % of Loans in P&I Repayment <sup>(1)</sup>**  
 Data for Legacy SLM thru April 30, 2014 and Sallie Mae Bank since May 1, 2014  
 P&I Vintages 2010-2014 <sup>(2)</sup>



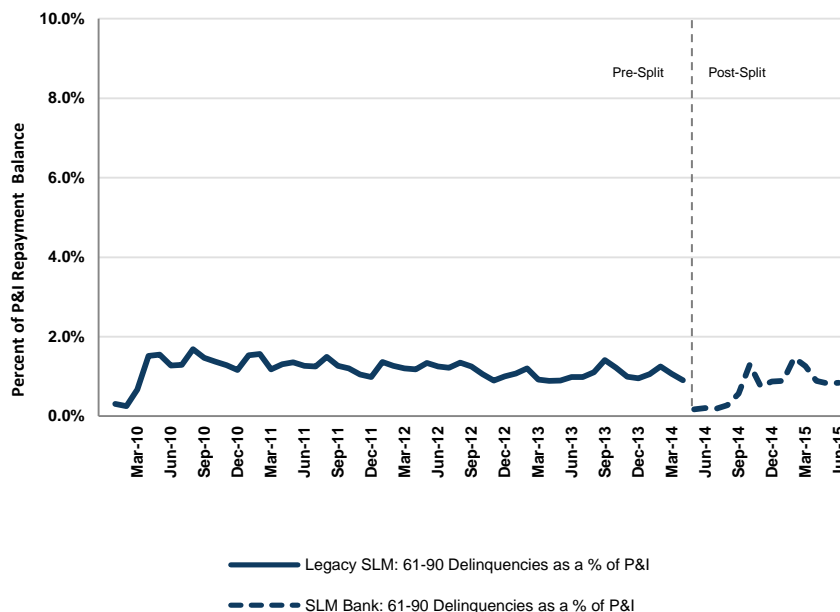
(1) Loans in 'P&I Repayment' includes only those loans for which scheduled principal and interest payments are due.

(2) SLM Bank 2010 'P&I Repayment' vintage not included due to insufficient data.

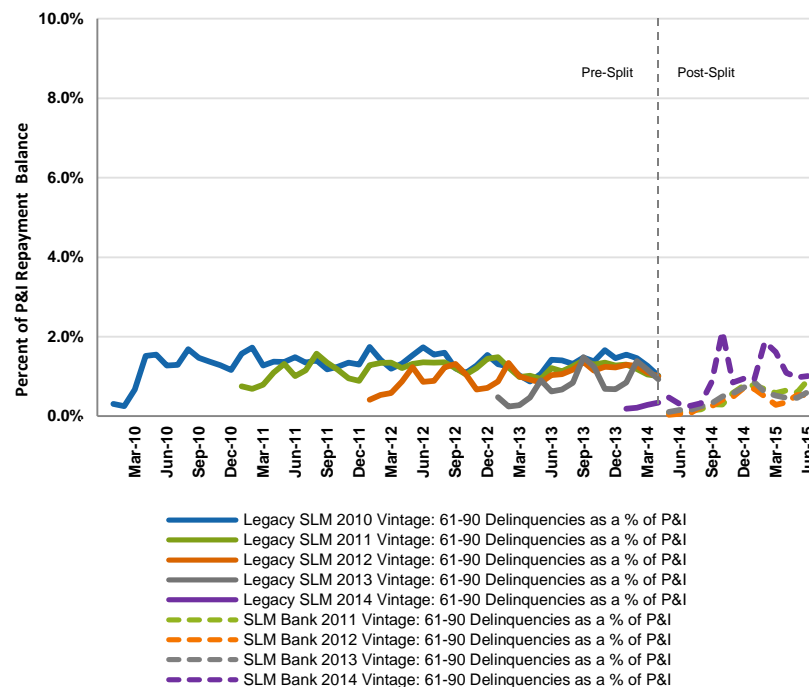
Note: Legacy SLM portfolio serviced pursuant to a 212 day charge off policy. Sallie Mae Bank portfolio serviced pursuant to a 120 day charge off policy. Historical trends may not be indicative of future performance.

## Smart Option Serviced Portfolio: 61-90 Day Delinquencies

**Smart Option Student Loans - Serviced Portfolio**  
**61-90 Day Delinquencies as a % of Loans in P&I Repayment <sup>(1)</sup>**  
 Data for Legacy SLM thru April 30, 2014 and Sallie Mae Bank since May 1, 2014



**Smart Option Student Loans - Serviced Portfolio**  
**61-90 Day Delinquencies as a % of Loans in P&I Repayment <sup>(1)</sup>**  
 Data for Legacy SLM thru April 30, 2014 and Sallie Mae Bank since May 1, 2014  
 P&I Vintages 2010-2014 <sup>(2)</sup>



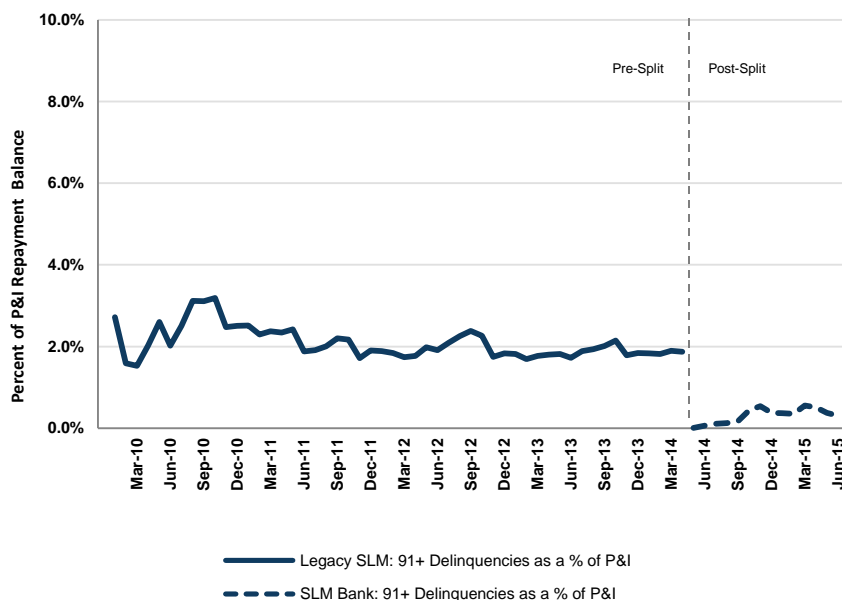
<sup>(1)</sup> Loans in 'P&I Repayment' includes only those loans for which scheduled principal and interest payments are due.

<sup>(2)</sup> SLM Bank 2010 'P&I Repayment' vintage not included due to insufficient data.

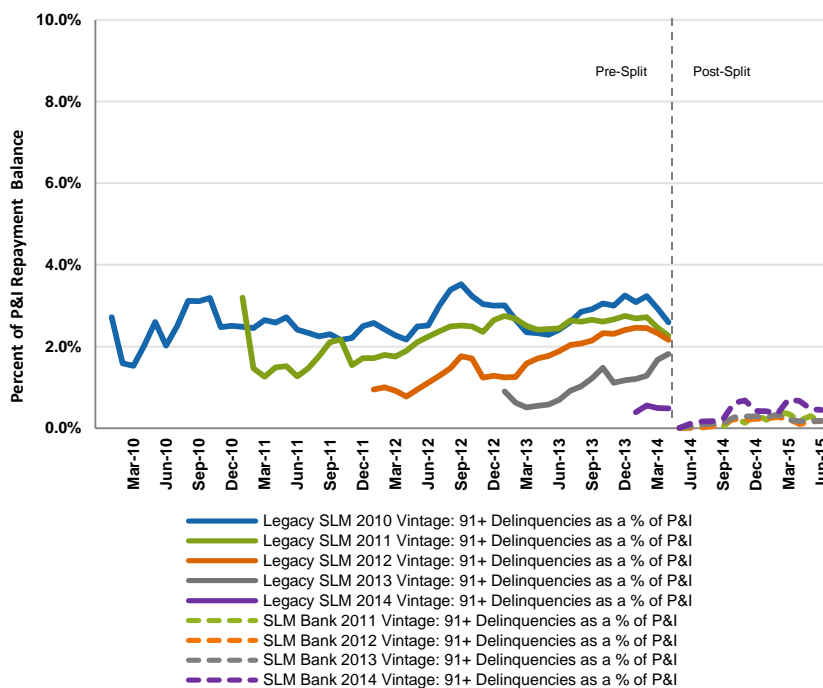
Note: Legacy SLM portfolio serviced pursuant to a 212 day charge off policy. Sallie Mae Bank portfolio serviced pursuant to a 120 day charge off policy. Historical trends may not be indicative of future performance.

## Smart Option Serviced Portfolio: 91+ Day Delinquencies

**Smart Option Student Loans - Serviced Portfolio**  
**91+ Day Delinquencies as a % of Loans in P&I Repayment <sup>(1)</sup>**  
 Data for Legacy SLM thru April 30, 2014 and Sallie Mae Bank since May 1, 2014



**Smart Option Student Loans - Serviced Portfolio**  
**91+ Day Delinquencies as a % of Loans in P&I Repayment <sup>(1)</sup>**  
 Data for Legacy SLM thru April 30, 2014 and Sallie Mae Bank since May 1, 2014  
 P&I Vintages 2010-2014 <sup>(2)</sup>



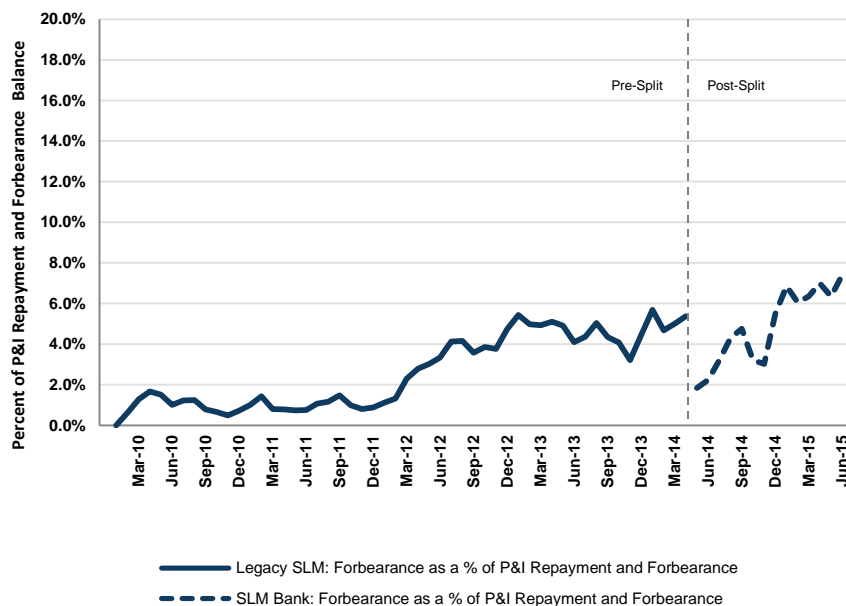
(1) Loans in 'P&I Repayment' includes only those loans for which scheduled principal and interest payments are due.

(2) SLM Bank 2010 'P&I Repayment' vintage not included due to insufficient data.

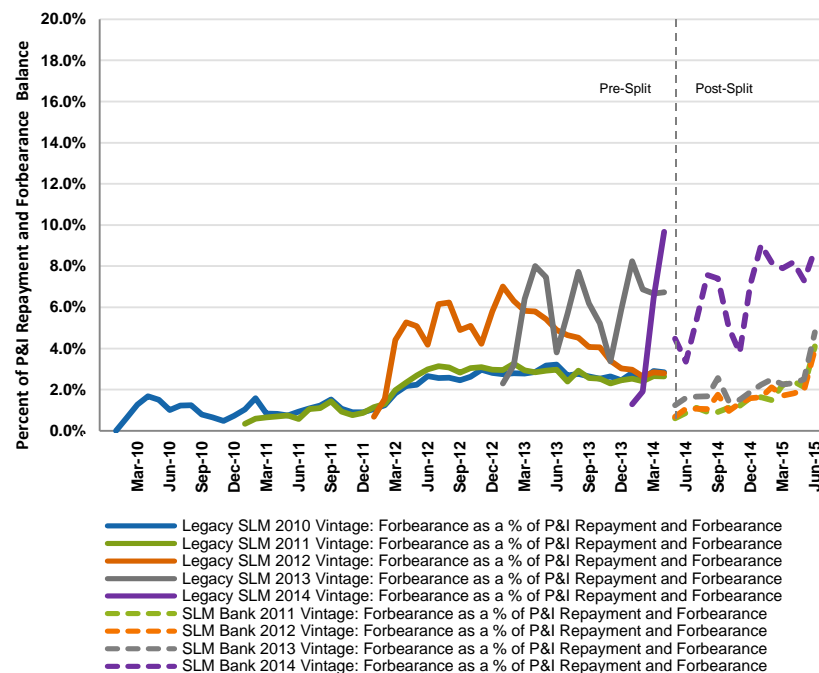
Note: Legacy SLM portfolio serviced pursuant to a 212 day charge off policy. Sallie Mae Bank portfolio serviced pursuant to a 120 day charge off policy. Historical trends may not be indicative of future performance.

## Smart Option Serviced Portfolio: Forbearance

**Smart Option Student Loans - Serviced Portfolio**  
Forbearance as a % of Loans in P&I Repayment and Forbearance <sup>(1), (2)</sup>  
Data for Legacy SLM thru April 30, 2014 and Sallie Mae Bank since May 1, 2014



**Smart Option Student Loans - Serviced Portfolio**  
Forbearance as a % of Loans in P&I Repayment and Forbearance <sup>(1), (2)</sup>  
Data for Legacy SLM thru April 30, 2014 and Sallie Mae Bank since May 1, 2014  
P&I Vintages 2010-2014 <sup>(3)</sup>

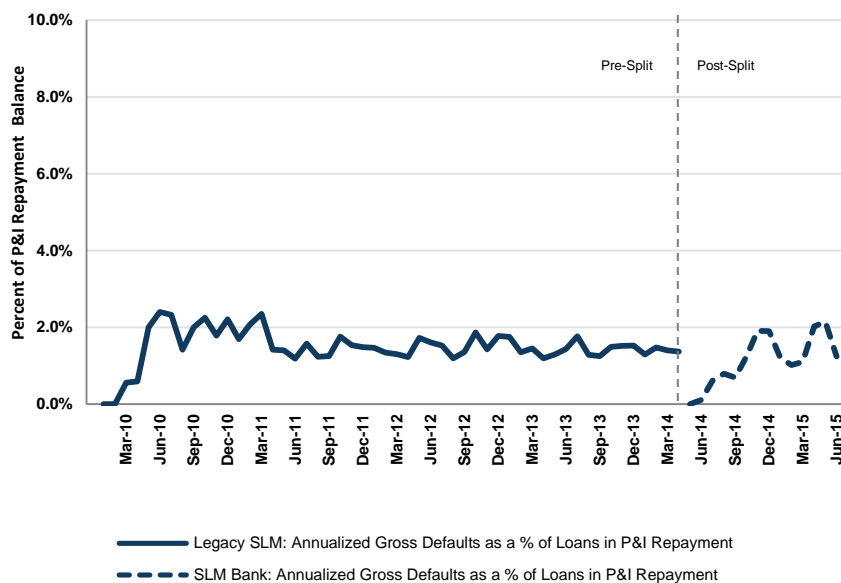


- (1) Loans in 'P&I Repayment' includes only those loans for which scheduled principal and interest payments are due.
- (2) On June 1, 2015 the FDIC published FIL-23-2015, which encouraged lenders to work constructively with borrowers impacted by the floods in Texas in the spring of 2015. A one-time, two month disaster forbearance was granted to all student loan customers resident in the impacted area. This doubled our forbearance rate in June. Substantially all of the borrowers were current at the time the forbearance was granted.
- (3) SLM Bank 2010 'P&I Repayment' vintage not included due to insufficient data.

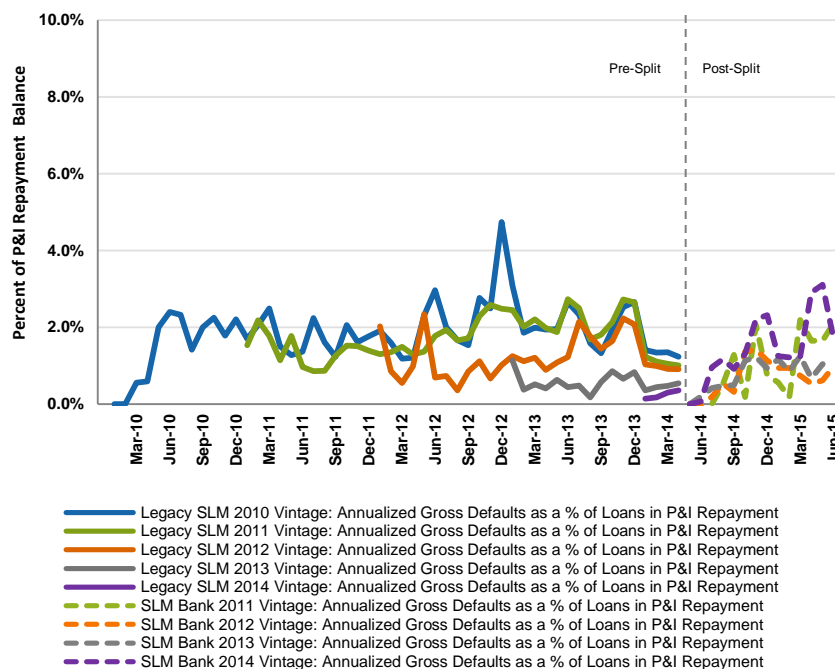
Note: Legacy SLM portfolio serviced pursuant to a 212 day charge off policy. Sallie Mae Bank portfolio serviced pursuant to a 120 day charge off policy. Historical trends may not be indicative of future performance.

## Smart Option Serviced Portfolio: Annualized Gross Defaults

**Smart Option Student Loans - Serviced Portfolio**  
Annualized Gross Defaults as a % of Loans in P&I Repayment<sup>(1)</sup>  
Data for Legacy SLM thru April 30, 2014 and Sallie Mae Bank since May 1, 2014



**Smart Option Student Loans - Serviced Portfolio**  
Annualized Gross Defaults as a % of Loans in P&I Repayment<sup>(1)</sup>  
Data for Legacy SLM thru April 30, 2014 and Sallie Mae Bank since May 1, 2014  
P&I Vintages 2010-2014<sup>(2)</sup>



(1) Loans in 'P&I Repayment' include only those loans for which scheduled principal and interest payments are due. Defaults occurring prior to 'P&I Repayment' are not represented in the data.

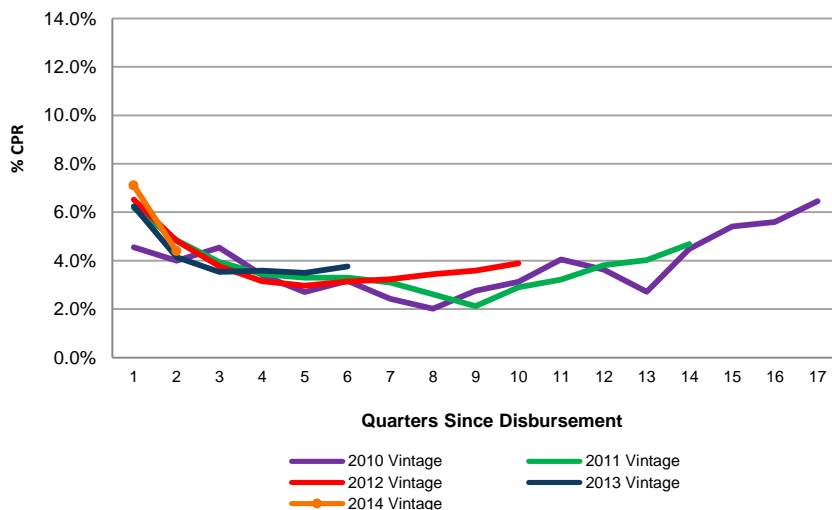
(2) SLM Bank 2010 'P&I Repayment' vintage not included due to insufficient data.

Note: Legacy SLM portfolio serviced pursuant to a 212 day charge off policy. Sallie Mae Bank portfolio serviced pursuant to a 120 day charge off policy. Historical trends may not be indicative of future performance.

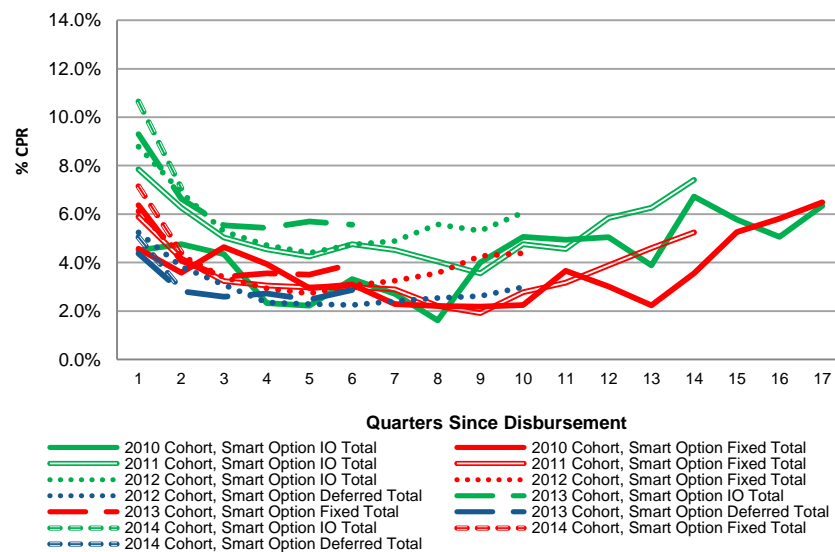
## Smart Option Vintage Data: Voluntary Prepayments

- Following the first year after disbursement, voluntary prepayments have generally ranged from between 2-3% for the Smart Option Deferred loan product, to 5-6% for the Interest Only product

**Smart Option Student Loans - Serviced Portfolio**  
**Voluntary CPR by Origination Vintage <sup>(1)</sup>**  
 Interest Only, Fixed Payment and Deferred Products  
 Data for Legacy SLM thru April 30, 2014 and Sallie Mae Bank since May 1, 2014 <sup>(2)</sup>



**Smart Option Student Loans - Serviced Portfolio**  
**Voluntary CPR by Origination Vintage and Product <sup>(1)</sup>**  
 Interest Only, Fixed Payment and Deferred Products  
 Data for Legacy SLM thru April 30, 2014 and Sallie Mae Bank since May 1, 2014 <sup>(2)</sup>



(1) Data for all loans from initial disbursement, whether or not scheduled payments are due. Voluntary CPR includes only voluntary prepayments.

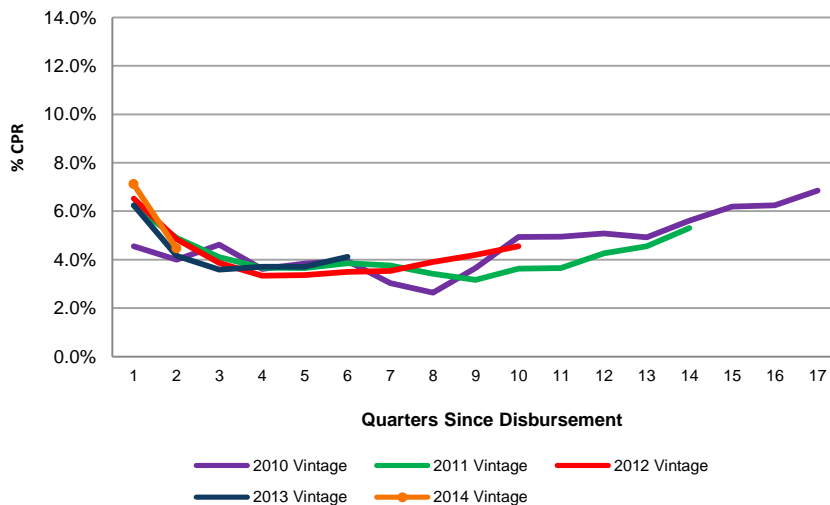
(2) Data as of June 30, 2015. Partial periods are removed from the analysis.

Note: Legacy SLM and Navient portfolio serviced pursuant to a 212 day charge-off policy. Sallie Mae Bank portfolio serviced pursuant to a 120 day charge-off policy. Historical trends may not be indicative of future performance.

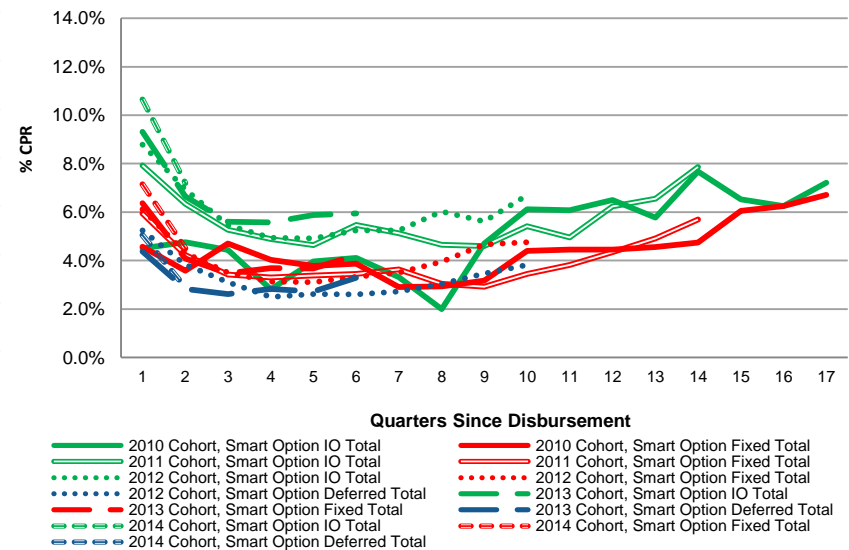
## Smart Option Vintage Data: Total Prepayments

- Following the first year after disbursement, total prepayments have generally ranged around 4%

**Smart Option Student Loans - Serviced Portfolio**  
**Total CPR by Origination Vintage <sup>(1)</sup>**  
 Interest Only, Fixed Payment and Deferred Products  
 Data for Legacy SLM thru April 30, 2014 and Sallie Mae Bank since May 1, 2014 <sup>(2)</sup>



**Smart Option Student Loans - Serviced Portfolio**  
**Total CPR by Origination Vintage and Product <sup>(1)</sup>**  
 Interest Only, Fixed Payment and Deferred Products  
 Data for Legacy SLM thru April 30, 2014 and Sallie Mae Bank since May 1, 2014 <sup>(2)</sup>



(1) Data for all loans from initial disbursement, whether or not scheduled payments are due. Total CPR includes both voluntary prepayments and defaults.

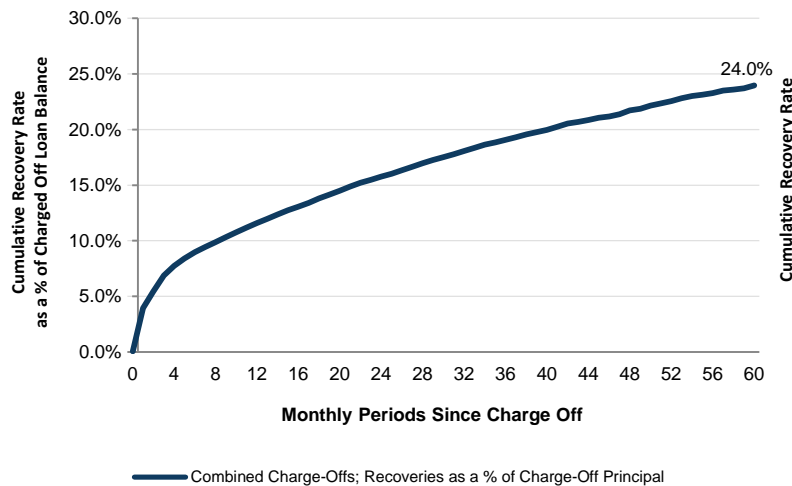
(2) Data as of June 30, 2015. Partial periods are removed from the analysis.

## Smart Option: Cumulative Recoveries

- Recoveries of charged-off Smart Option Student Loans® historically have occurred over a longer period than for many other types of unsecured consumer credit

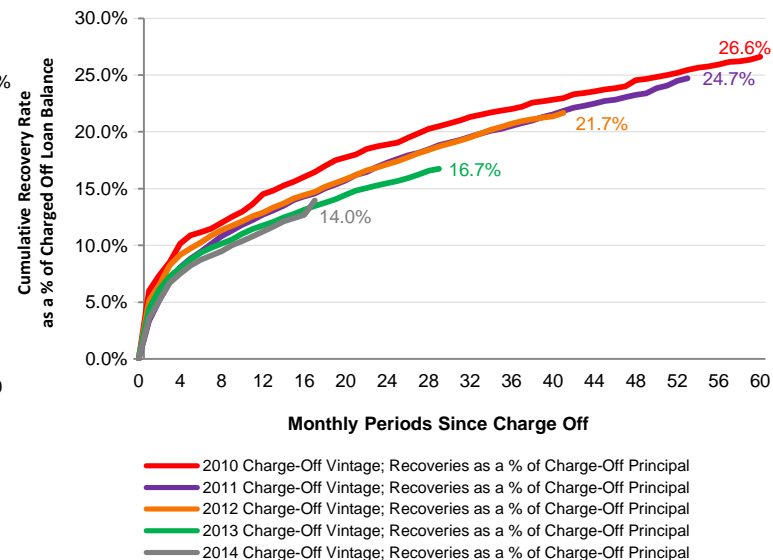
**Smart Option Loan Cumulative Recovery Rate for Combined Charge-Offs Since 2010**

Data for Legacy SLM and Navient thru June 30, 2015 <sup>(1)</sup>



**Smart Option Loan Cumulative Recovery Rate For Charge-Off Vintages Since 2010**

Data for Legacy SLM and Navient thru June 30, 2015 <sup>(1)</sup>



(1) Certain data used in the charts above was provided by Navient under a data sharing agreement. Sallie Mae Bank has not independently verified, and is not able to verify, the accuracy or completeness of the data provided under the agreement.

Note: Recovery data is for collections of charged-off Smart Option loans managed by legacy SLM and Navient only. Sallie Mae Bank is currently selling charged off loans to third parties. Sallie Mae Bank intends to add third party collection agency management, account placement and other functionality necessary to manage charged-off loan collections internally. In the future, Sallie Mae expects to have the option of selling or internally managing collections of charged off loans, and to utilize one or both of those strategies at any time based on market conditions. Legacy SLM and Navient portfolio serviced pursuant to a 212 day charge-off policy. Sallie Mae Bank portfolio serviced pursuant to a 120 day charge-off policy. Historical trends may not be indicative of future performance.



## Cohort Default Triangles

## Smart Option Loan Program Cohort Default Triangles

- ▶ The following cohort default triangles provide loan performance information for Legacy SLM, Navient and Sallie Mae Bank serviced Smart Option loans combined, thru the most recent period indicated <sup>(1)</sup>
- ▶ Terms and calculations used in the cohort default triangles are defined below:
  - ▶ P&I Repayment Year – The calendar year that loans entered P&I repayment
    - All Smart Option loans are considered to be in P&I repayment any time the borrower is required to make full principal and interest payments on the loan
  - ▶ Disbursed Principal Entering P&I Repayment – The amount of principal entering P&I repayment in a given year, based on disbursed principal prior to any interest capitalization
  - ▶ Years in P&I Repayment – Measured in years between P&I repayment start date and default date. Year zero represents defaults that occurred prior to the start of P&I repayment
  - ▶ Periodic Defaults – Defaulted principal in each Year in P&I Repayment as a percentage of the disbursed principal entering repayment in each P&I Repayment Year
    - Defaulted principal includes any interest capitalization that occurred prior to default
    - Defaulted principal is not reduced by any amounts recovered after the loan defaulted
    - Because the numerator includes capitalized interest while the denominator does not, default rates are higher than if the numerator and denominator both included capitalized interest
  - ▶ Total – The sum of Periodic Defaults across Years in P&I Repayment for each P&I Repayment Year

(1) Data excludes loans made to borrowers attending certain for profit schools not included in legacy SLM securitizations. Excluded loans represent less than one percent of the total loan balances.

Note: Historical trends suggested by the cohort default triangles may not be indicative of future performance. Legacy SLM and Navient serviced loans were serviced pursuant to a 212 day charge off policy. Sallie Mae Bank serviced loans were serviced pursuant to a 120 day charge off policy.

## Cohort Default Triangles – Smart Option Combined (IO, Fixed & Deferred)

### Smart Option Combined (P&I Repayment Status - Total)

P&I Repayment Year	Disbursed Principal Entering P&I Repayment (\$m)	Periodic Defaults by Years in P&I Repayment <sup>(1), (2), (3)</sup>						
		0	1	2	3	4	5	Total
2010	\$440	1.0%	1.2%	1.1%	1.0%	0.9%	0.4%	5.7%
2011	\$1,020	0.8%	1.0%	1.3%	1.0%	0.7%		4.8%
2012	\$1,657	0.5%	0.8%	1.3%	0.8%			3.4%
2013	\$2,298	0.3%	0.9%	1.2%				2.4%
2014	\$2,848	0.3%	1.0%					1.3%

### Smart Option Combined (P&I Repayment Status - Co-Signer)

P&I Repayment Year	Disbursed Principal Entering P&I Repayment (\$m)	Periodic Defaults by Years in P&I Repayment <sup>(1), (2), (3)</sup>						
		0	1	2	3	4	5	Total
2010	\$420	1.0%	1.1%	1.1%	1.0%	0.9%	0.4%	5.5%
2011	\$936	0.7%	0.9%	1.2%	1.0%	0.6%		4.4%
2012	\$1,512	0.4%	0.6%	1.1%	0.8%			2.9%
2013	\$2,083	0.3%	0.7%	1.0%				2.0%
2014	\$2,567	0.3%	0.7%					1.0%

### Smart Option Combined (P&I Repayment Status - No Co-Signer)

P&I Repayment Year	Disbursed Principal Entering P&I Repayment (\$m)	Periodic Defaults by Years in P&I Repayment <sup>(1), (2), (3)</sup>						
		0	1	2	3	4	5	Total
2010	\$20	1.5%	2.4%	1.7%	1.6%	1.2%	0.5%	8.9%
2011	\$85	1.8%	2.6%	2.2%	1.8%	1.0%		9.3%
2012	\$145	1.1%	2.5%	2.9%	1.6%			8.0%
2013	\$215	0.8%	2.6%	2.7%				6.1%
2014	\$282	0.9%	2.9%					3.8%

Data as of 6/30/15.

(1) Private education loans marketed under the Smart Option Student Loan brand.

(2) Periodic Defaults for the most recent calendar Year in P&I Repayment are for a partial year.

(3) Numerator is the amount of principal in each P&I Repayment Cohort that defaulted in each Year in P&I Repayment. Denominator is the amount of disbursed principal for that P&I Repayment Year.

Note: Certain data used in the charts above was provided by Navient under a data sharing agreement. Sallie Mae Bank has not independently verified, and is not able to verify, the accuracy or completeness of the data provided under the agreement. Cumulative charge off rate calculations for the period ended June 30, 2015 include \$28.7 million of charged off loans sold to third parties prior to March 31, 2015 not included in previously reported cumulative charge off rate calculations. Inclusion of these charge offs contributed to the increase in cumulative charge off rates for the period ended June 30, 2015 over those previously reported for the period ended March 31, 2015.

## Cohort Default Triangles – Smart Option Interest Only

### Smart Option IO (P&I Repayment Status - Total)

P&I Repayment Year	Disbursed Principal Entering P&I Repayment (\$m)	Periodic Defaults by Years in P&I Repayment <sup>(1), (2), (3)</sup>						
		0	1	2	3	4	5	Total
2010	\$439	1.1%	1.2%	1.1%	1.0%	0.9%	0.4%	5.7%
2011	\$785	0.9%	0.9%	1.2%	0.9%	0.6%		4.6%
2012	\$865	0.7%	0.6%	0.9%	0.6%			2.8%
2013	\$901	0.6%	0.6%	0.8%				1.9%
2014	\$870	0.5%	0.5%					1.0%

### Smart Option IO (P&I Repayment Status - Co-Signer)

P&I Repayment Year	Disbursed Principal Entering P&I Repayment (\$m)	Periodic Defaults by Years in P&I Repayment <sup>(1), (2), (3)</sup>						
		0	1	2	3	4	5	Total
2010	\$419	1.0%	1.1%	1.1%	1.0%	0.9%	0.4%	5.5%
2011	\$724	0.8%	0.8%	1.2%	0.9%	0.6%		4.3%
2012	\$797	0.6%	0.5%	0.8%	0.6%			2.6%
2013	\$827	0.5%	0.5%	0.7%				1.6%
2014	\$790	0.5%	0.4%					0.8%

### Smart Option IO (P&I Repayment Status - No Co-Signer)

P&I Repayment Year	Disbursed Principal Entering P&I Repayment (\$m)	Periodic Defaults by Years in P&I Repayment <sup>(1), (2), (3)</sup>						
		0	1	2	3	4	5	Total
2010	\$20	1.5%	2.5%	1.7%	1.6%	1.2%	0.5%	9.0%
2011	\$61	2.0%	2.2%	1.8%	1.5%	0.9%		8.5%
2012	\$68	1.3%	1.8%	2.2%	1.0%			6.3%
2013	\$74	1.4%	1.9%	1.7%				5.0%
2014	\$80	1.3%	1.5%					2.8%

Data as of 6/30/15.

(1) Private education loans marketed under the Smart Option Student Loan brand.

(2) Periodic Defaults for the most recent calendar Year in P&I Repayment are for a partial year.

(3) Numerator is the amount of principal in each P&I Repayment Cohort that defaulted in each Year in P&I Repayment. Denominator is the amount of disbursed principal for that P&I Repayment Year.

Note: Certain data used in the charts above was provided by Navient under a data sharing agreement. Sallie Mae Bank has not independently verified, and is not able to verify, the accuracy or completeness of the data provided under the agreement. Cumulative charge off rate calculations for the period ended June 30, 2015 include \$28.7 million of charged off loans sold to third parties prior to March 31, 2015 not included in previously reported cumulative charge off rate calculations. Inclusion of these charge offs contributed to the increase in cumulative charge off rates for the period ended June 30, 2015 over those previously reported for the period ended March 31, 2015.

## Cohort Default Triangles – Smart Option Fixed Payment

### Smart Option Fixed Payment (P&I Repayment Status - Total)

P&I Repayment Year	Disbursed Principal Entering P&I Repayment (\$m)	Periodic Defaults by Years in P&I Repayment <sup>(1), (2), (3)</sup>					
		0	1	2	3	4	Total
2011	\$230	0.3%	1.2%	1.5%	1.4%	0.9%	5.3%
2012	\$538	0.4%	0.8%	1.7%	1.1%		4.0%
2013	\$741	0.3%	0.8%	1.2%			2.4%
2014	\$966	0.4%	0.7%				1.1%

### Smart Option Fixed Payment (P&I Repayment Status - Co-Signer)

P&I Repayment Year	Disbursed Principal Entering P&I Repayment (\$m)	Periodic Defaults by Years in P&I Repayment <sup>(1), (2), (3)</sup>					
		0	1	2	3	4	Total
2011	\$207	0.2%	0.9%	1.3%	1.3%	0.9%	4.6%
2012	\$490	0.3%	0.6%	1.5%	1.0%		3.4%
2013	\$677	0.3%	0.7%	1.1%			2.1%
2014	\$883	0.3%	0.6%				0.8%

### Smart Option Fixed Payment (P&I Repayment Status – No Co-Signer)

P&I Repayment Year	Disbursed Principal Entering P&I Repayment (\$m)	Periodic Defaults by Years in P&I Repayment <sup>(1), (2), (3)</sup>					
		0	1	2	3	4	Total
2011	\$23	1.2%	3.5%	3.2%	2.4%	1.2%	11.4%
2012	\$48	1.3%	2.7%	3.8%	1.9%		9.7%
2013	\$63	1.0%	2.5%	2.5%			6.0%
2014	\$83	1.3%	2.3%				3.6%

Data as of 6/30/15.

(1) Private education loans marketed under the Smart Option Student Loan brand.

(2) Periodic Defaults for the most recent calendar Year in P&I Repayment are for a partial year.

(3) Numerator is the amount of principal in each P&I Repayment Cohort that defaulted in each Year in P&I Repayment. Denominator is the amount of disbursed principal for that P&I Repayment Year.

Note: Certain data used in the charts above was provided by Navient under a data sharing agreement. Sallie Mae Bank has not independently verified, and is not able to verify, the accuracy or completeness of the data provided under the agreement. Cumulative charge off rate calculations for the period ended June 30, 2015 include \$28.7 million of charged off loans sold to third parties prior to March 31, 2015 not included in previously reported cumulative charge off rate calculations. Inclusion of these charge offs contributed to the increase in cumulative charge off rates for the period ended June 30, 2015 over those previously reported for the period ended March 31, 2015.

## Cohort Default Triangles – Smart Option Deferred Payment

### Smart Option Deferred (P&I Repayment Status - Total)

P&I Repayment Year	Disbursed Principal Entering P&I Repayment (\$m)	Periodic Defaults by Years in P&I Repayment <sup>(1), (2), (3)</sup>				
		0	1	2	3	Total
2012	\$253	0.0%	1.2%	1.4%	1.2%	3.9%
2013	\$657	0.0%	1.3%	1.8%		3.2%
2014	\$1,012	0.1%	1.6%			1.8%

### Smart Option Deferred (P&I Repayment Status - Co-Signer)

P&I Repayment Year	Disbursed Principal Entering P&I Repayment (\$m)	Periodic Defaults by Years in P&I Repayment <sup>(1), (2), (3)</sup>				
		0	1	2	3	Total
2012	\$224	0.0%	0.9%	1.2%	1.1%	3.2%
2013	\$579	0.0%	1.1%	1.5%		2.6%
2014	\$893	0.1%	1.2%			1.4%

### Smart Option Deferred (P&I Repayment Status – No Co-Signer)

P&I Repayment Year	Disbursed Principal Entering P&I Repayment (\$m)	Periodic Defaults by Years in P&I Repayment <sup>(1), (2), (3)</sup>				
		0	1	2	3	Total
2012	\$29	0.0%	3.8%	3.0%	2.3%	9.1%
2013	\$78	0.1%	3.3%	3.7%		7.1%
2014	\$119	0.3%	4.3%			4.7%

Data as of 6/30/15.

(1) Private education loans marketed under the Smart Option Student Loan brand.

(2) Periodic Defaults for the most recent calendar Year in P&I Repayment are for a partial year.

(3) Numerator is the amount of principal in each P&I Repayment Cohort that defaulted in each Year in P&I Repayment. Denominator is the amount of disbursed principal for that P&I Repayment Year.

Note: Certain data used in the charts above was provided by Navient under a data sharing agreement. Sallie Mae Bank has not independently verified, and is not able to verify, the accuracy or completeness of the data provided under the agreement. Cumulative charge off rate calculations for the period ended June 30, 2015 include \$28.7 million of charged off loans sold to third parties prior to March 31, 2015 not included in previously reported cumulative charge off rate calculations. Inclusion of these charge offs contributed to the increase in cumulative charge off rates for the period ended June 30, 2015 over those previously reported for the period ended March 31, 2015.