

17TH ANNUAL CREDIT SUISSE FINANCIAL SERVICES FORUM

FEBRUARY 9, 2016

STEVE MCGARRY, EVP & CFO



Forward-Looking Statements and Disclaimer

Cautionary Note Regarding Forward-Looking Statements

The following information is current as of January 20, 2016 (unless otherwise noted) and should be read in connection with the press release of SLM Corporation (the “Company”) announcing its financial results for the quarter and full year ended December 31, 2015 and subsequent reports filed with the Securities and Exchange Commission (“SEC”).

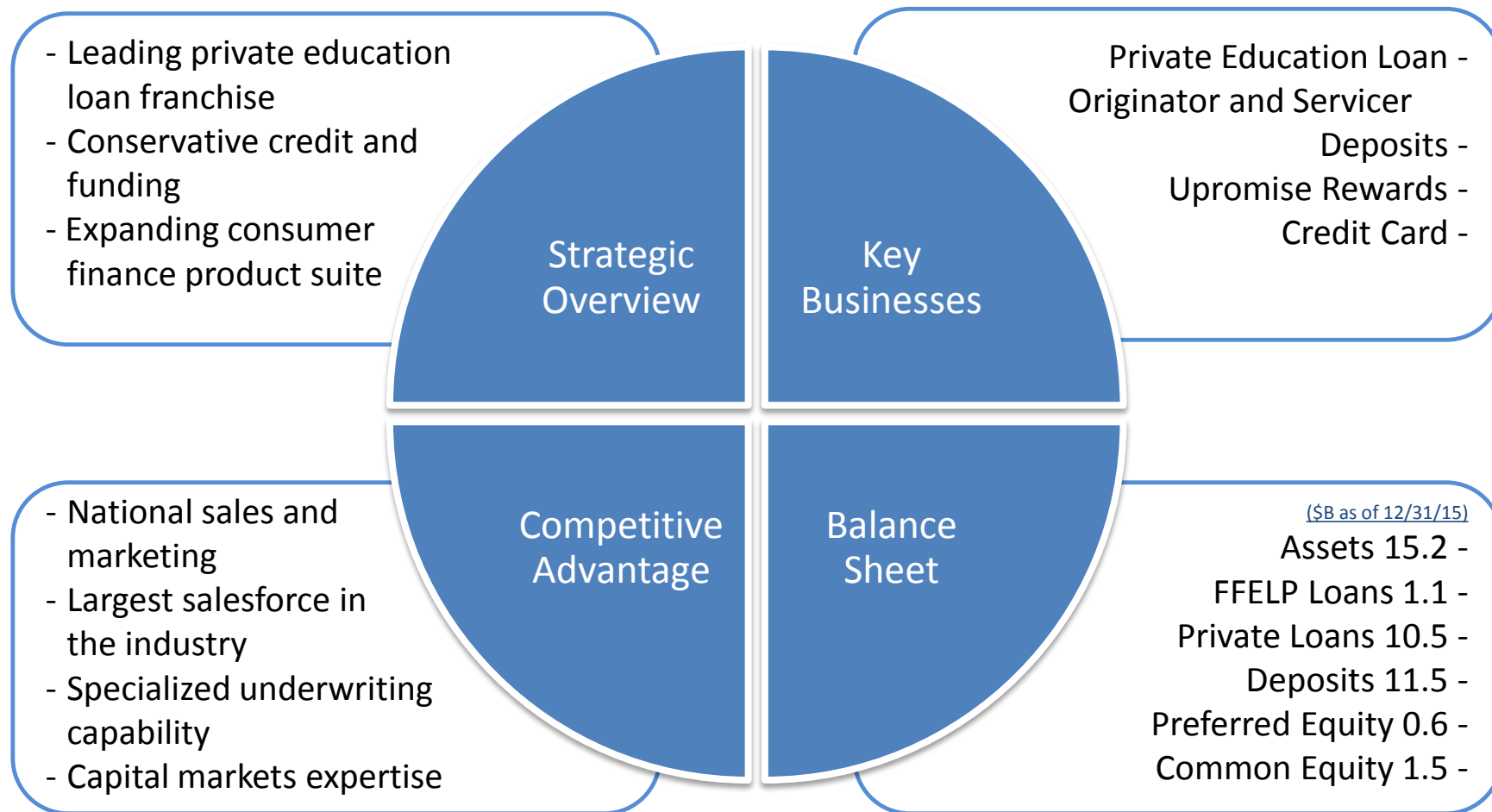
This Presentation contains “forward-looking” statements and information based on management’s current expectations as of the date of this Presentation. Statements that are not historical facts, including statements about the Company’s beliefs, opinions or expectations and statements that assume or are dependent upon future events, are forward-looking statements. Forward-looking statements are subject to risks, uncertainties, assumptions and other factors that may cause actual results to be materially different from those reflected in such forward-looking statements. These factors include, among others, the risks and uncertainties set forth in Item 1A “Risk Factors” and elsewhere in the Company’s Annual Report on Form 10-K for the year ended Dec. 31, 2014 (filed with the SEC on Feb. 26, 2015) and subsequent filings with the SEC; increases in financing costs; limits on liquidity; increases in costs associated with compliance with laws and regulations; changes in accounting standards and the impact of related changes in significant accounting estimates; any adverse outcomes in any significant litigation to which the Company is a party; credit risk associated with the Company’s exposure to third parties, including counterparties to the Company’s derivative transactions; and changes in the terms of education loans and the educational credit marketplace (including changes resulting from new laws and the implementation of existing laws). The Company could also be affected by, among other things: changes in its funding costs and availability; reductions to its credit ratings; failures or breaches of its operating systems or infrastructure, including those of third-party vendors; damage to its reputation; failures to successfully implement cost-cutting and restructuring initiatives and adverse effects of such initiatives on the Company’s business; risks associated with restructuring initiatives; changes in the demand for educational financing or in financing preferences of lenders, educational institutions, students and their families; changes in law and regulations with respect to the student lending business and financial institutions generally; changes in banking rules and regulations, including increased capital requirements; increased competition from banks and other consumer lenders; the creditworthiness of customers; changes in the general interest rate environment, including the rate relationships among relevant money-market instruments and those of earning assets versus funding arrangements; rates of prepayments on the loans made by the Company and its subsidiaries; changes in general economic conditions and the Company’s ability to successfully effectuate any acquisitions; and other strategic initiatives. The preparation of the Company’s consolidated financial statements also requires management to make certain estimates and assumptions, including estimates and assumptions about future events. These estimates or assumptions may prove to be incorrect. All forward-looking statements contained in this Presentation are qualified by these cautionary statements and are made only as of the date of this Presentation. The Company does not undertake any obligation to update or revise these forward-looking statements to conform such statements to actual results or changes in its expectations.

The Company reports financial results on a GAAP basis and also provides certain “Core Earnings” performance measures. The difference between the Company’s “Core Earnings” and GAAP results for the periods presented were the unrealized, mark-to-market gains/losses on derivative contracts. These are recognized in GAAP, but not in “Core Earnings” results. The Company provides “Core Earnings” measures because this is what management uses when making management decisions regarding the Company’s performance and the allocation of corporate resources. The Company’s “Core Earnings” are not defined terms within GAAP and may not be comparable to similarly titled measures reported by other companies.

For additional information, see “Management’s Discussion and Analysis of Financial Condition and Results of Operations – GAAP Consolidated Earnings Summary-‘Core Earnings’” in the Company’s Quarterly Report on Form 10-Q for the quarter ended September 30, 2015 for a further discussion and the “Core Earnings” to GAAP Reconciliation” table in this Presentation for a complete reconciliation between GAAP net income and “Core Earnings”.

Disclaimer. A significant portion of the historical data relating to historical Smart Option Student Loan performance used to prepare certain of these materials was provided to the Company by Navient Corporation (“Navient”) pursuant to a Data Sharing Agreement executed in connection with the Spin-Off (as hereinafter defined). Under the Data Sharing Agreement, Navient makes no representations or warranties to the Company concerning the accuracy and completeness of information that they provided. The Company and Sallie Mae Bank have not independently verified, and are not able to verify, the accuracy or completeness of the data provided under the agreement or of Navient’s representations and warranties. Although we have no reason to believe that the data received from Navient and used to prepare the tabular and graphic presentations in this document as a whole is materially inaccurate or incomplete, and have assumed that the data provided by Navient under the Data Sharing Agreement as a whole to be materially accurate and complete, neither the Company nor any person on its behalf has independently verified the accuracy and completeness of such data.

Sallie Mae Summary



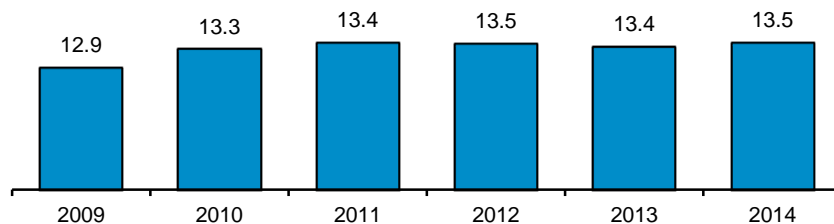
Sallie Mae Highlights

- Originated \$4.3 billion of high quality Private Education Loans in 2015 (+6% vs. 2014)
- Grew Private Education Loan portfolio 28% from 2014 to 2015
- Grew market share in 2014 and 2015 to 54%
- Generated earnings² of \$255 million in 2015, up 40% from 2014
- Completed \$1.5 billion of loan sales in 2015 at an average premium of approximately 9%
- Completed the first term funding securitization in the third quarter 2015
- Completed the transition of servicing platforms with the implementation of the originations platform in the summer of 2015

Favorable Student Loan Market Trends

Academic Year Enrollment at Four-Year Degree Granting Institutions⁽³⁾

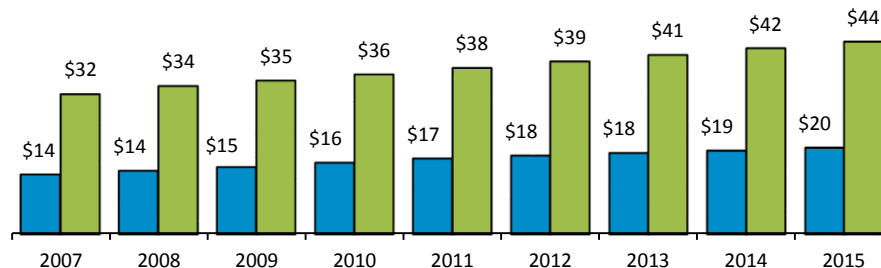
(millions)



Annual Cost of Education⁽⁴⁾

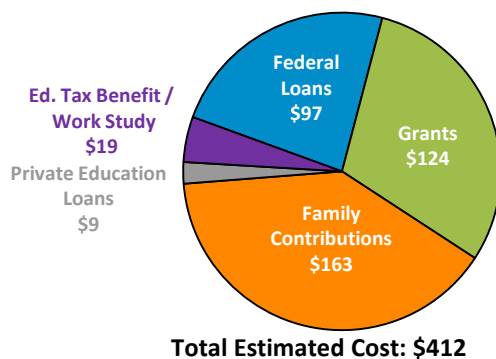
(thousands)

Public Private



Estimated Total Cost of Education – 2014 / 2015 AY⁽⁵⁾

(billions)

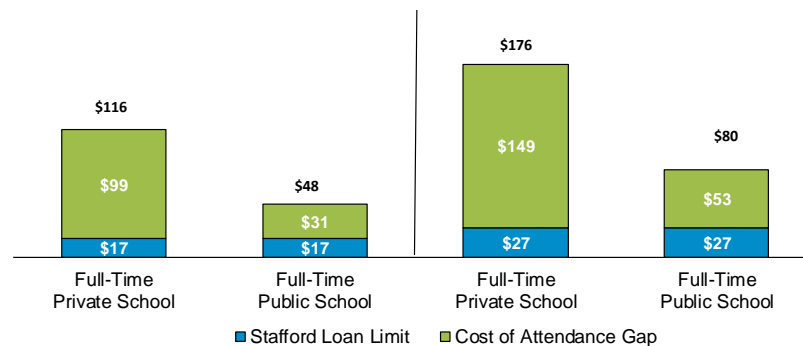


Cost of College (Based on a Four-Year Term)⁽⁶⁾

(thousands)

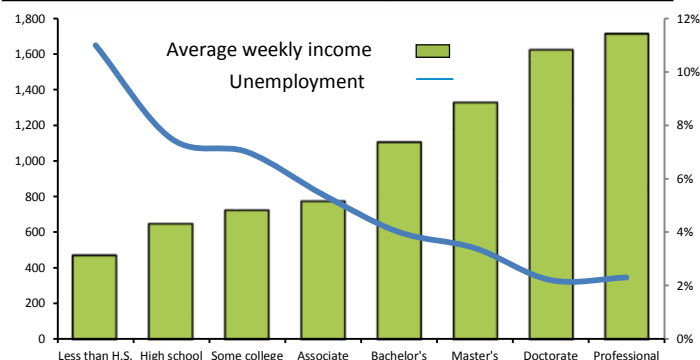
AY 2005-2006

AY 2015-2016

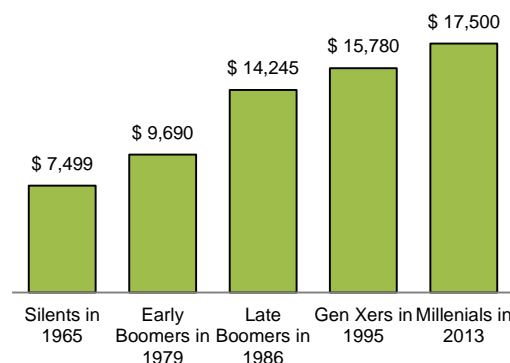


Higher Education Value Proposition

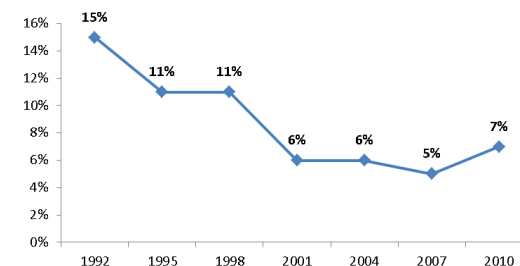
Relationship Between Higher Education, Income and Employment⁽⁷⁾



Incremental Earnings From a College Degree Has Increased For Generations⁽⁸⁾



Payment to Income Ratio⁽⁹⁾



Key Statistics

- The unemployment rate for individuals 25 to 34 years-old with four-year college degrees was 2.4%, compared to 7.1% for high school graduates⁽⁷⁾
- 64% of students graduate with student loans in AY 2014-2015⁽⁶⁾
- 67% of student loan borrowers have debt balances less than \$25,000 and 4% have balances above \$100,000 (average borrowings of \$26,700) ⁽⁶⁾
- The average payment-to-income ratio declined from 15% in 1992 to 7% in 2010⁽⁹⁾

Smart Option Overview

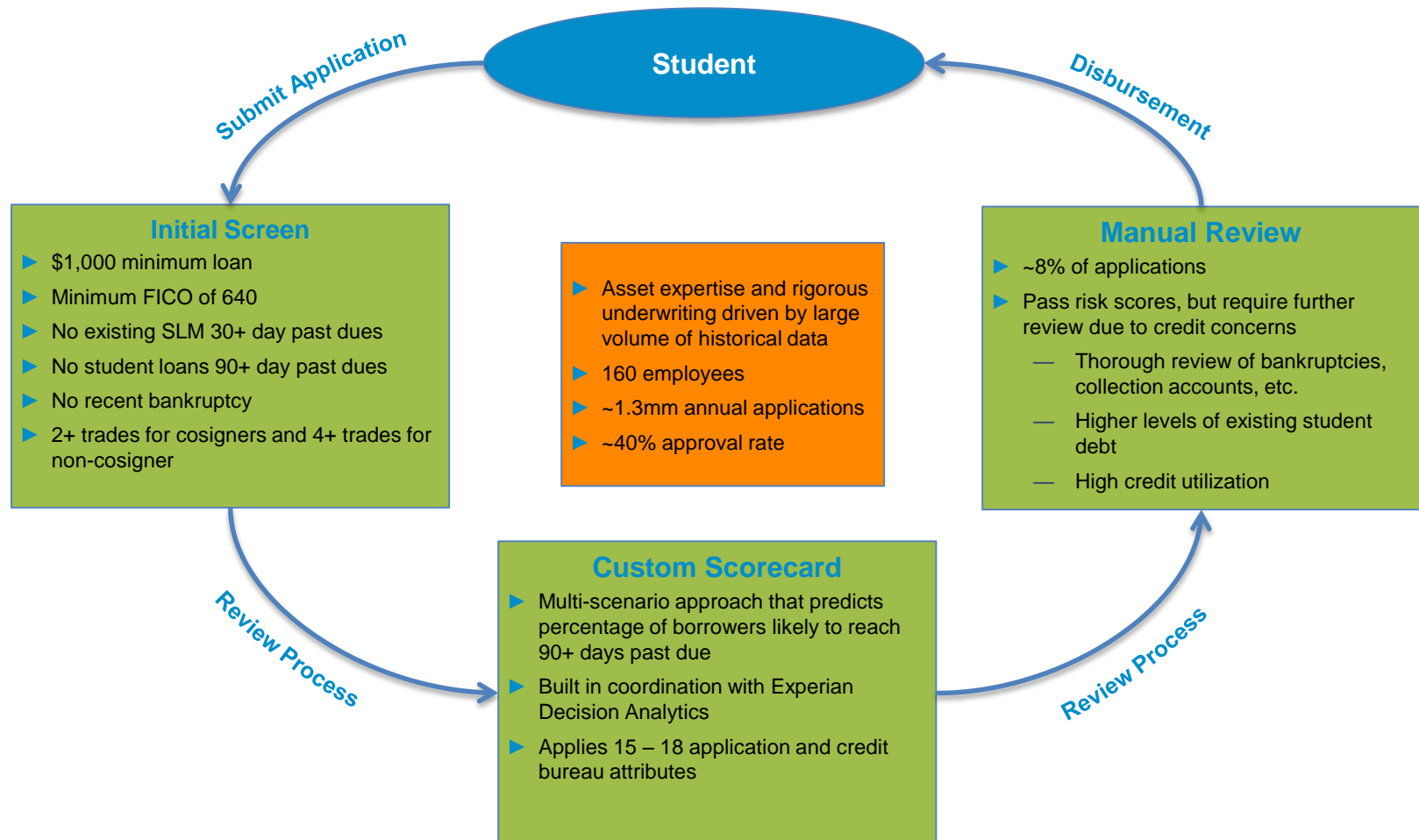
Product Features

- Offers three repayment options while in school, which include Interest Only, \$25 Fixed Payment and Deferred Repayment
- Variable and Fixed Interest Rate Options
- All loans are certified by the school's financial aid office to ensure all proceeds are for educational expenses

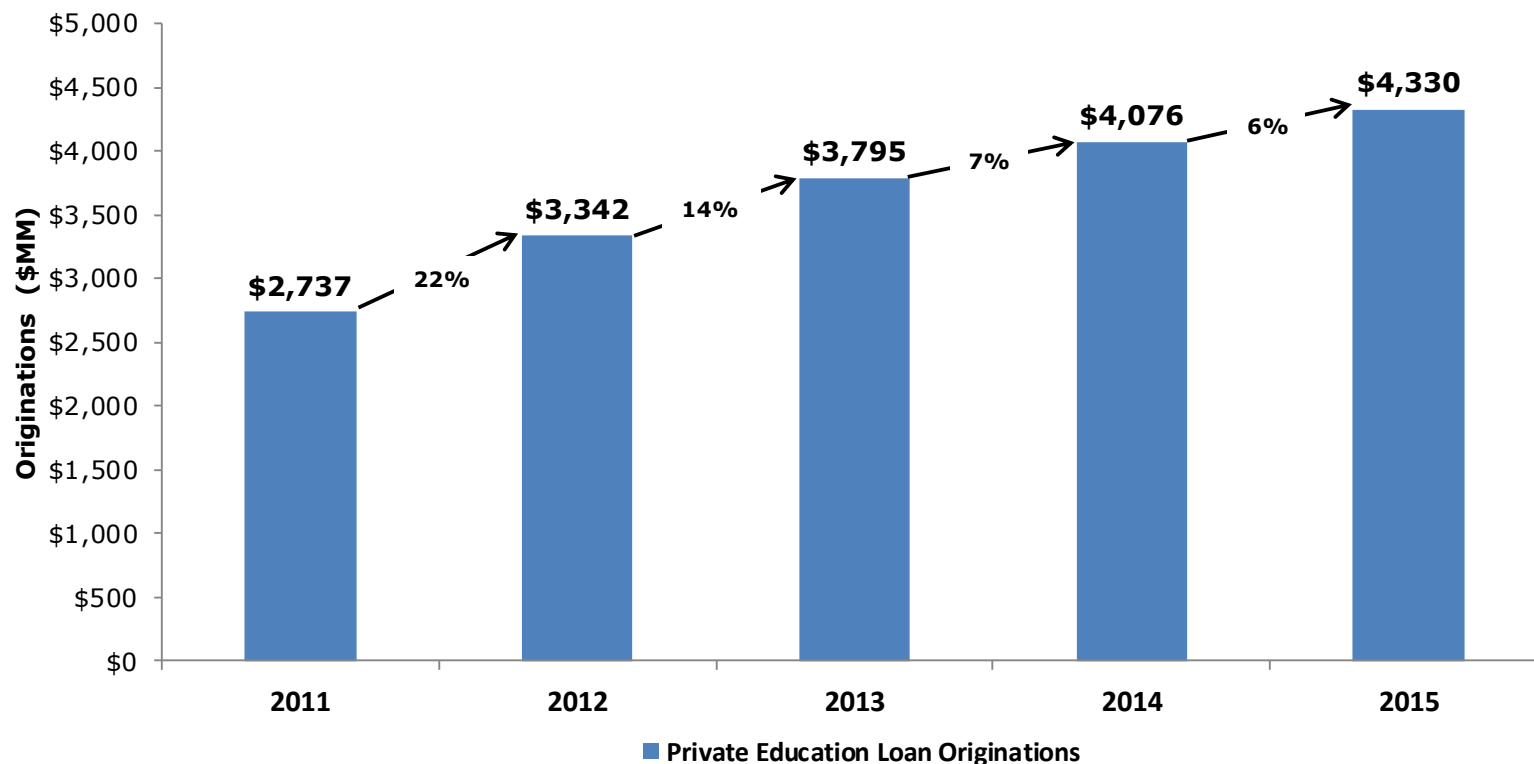
Distribution Channels

- Nationally recognized brand
- Largest national sales force in industry actively manages over 2,400 college relationships
- Represented on vast majority of college directed preferred lender lists
- Significant marketing experience to prospective customers through paid search, affiliates, display, direct mail and email
- Leverage low cost customer channels to contribute to significant serialization in following years
- Marketing and distribution through partnerships with banks, credit unions, resellers and membership organizations

Analytical Approach to Credit



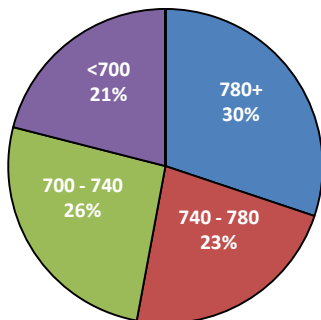
High Quality Private Education Loan Originations Growth



<u>Originations Statistics (\$)</u>	<u>2011</u>	<u>2012</u>	<u>2013</u>	<u>2014</u>	<u>2015</u>
% Cosigned	91%	90%	90%	90%	90%
% In School Payment	73%	58%	56%	56%	56%
Average Originated FICO	748	746	745	749	748

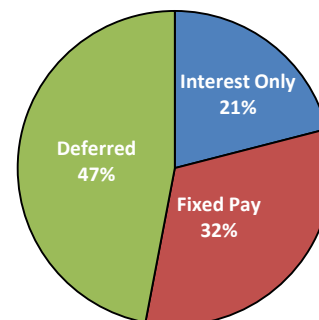
High Quality Private Education Portfolio

Customer FICO at Origination



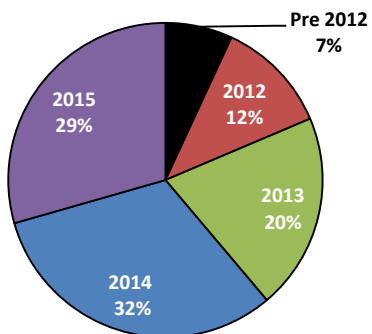
Weighted Average FICO: 746

Smart Option Payment Type



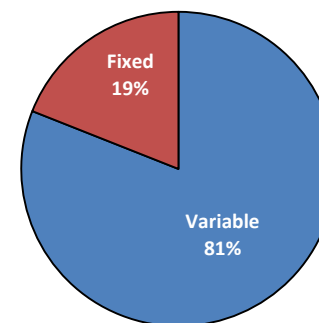
Smart Option Loans: \$10.2bn

Portfolio by Originations Vintage



Weighted Average Age of Loan: ~1.7 years

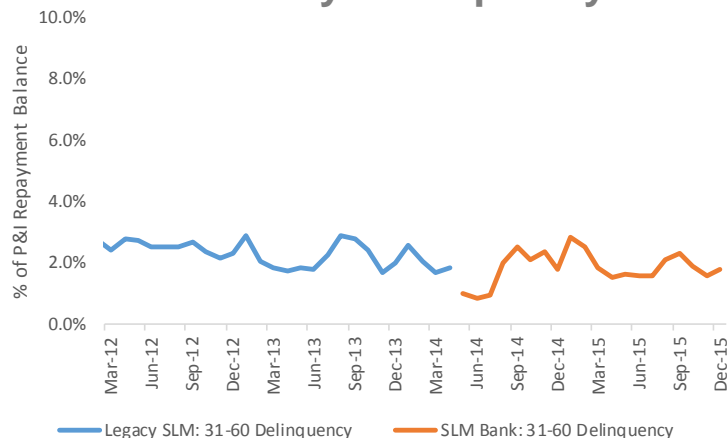
Portfolio Interest Rate Type



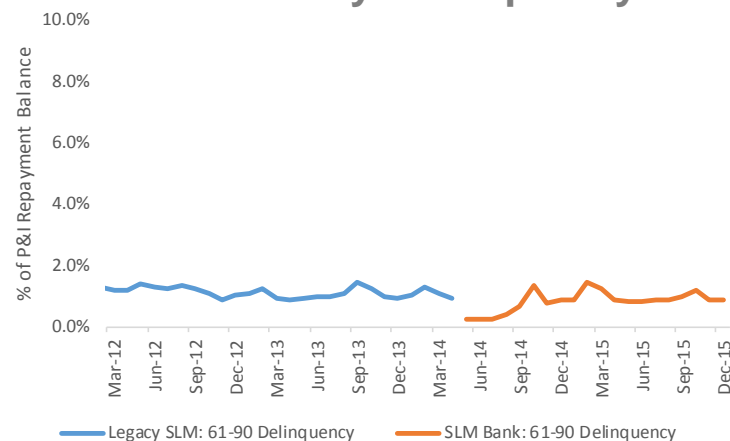
Delinquency and Default Performance

(As a % of Loans in P&I Repayment)^{(10),(11),(12)}

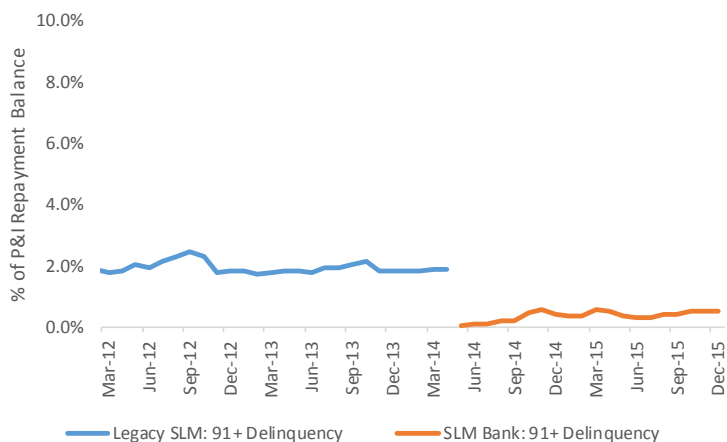
31-60 Day Delinquency



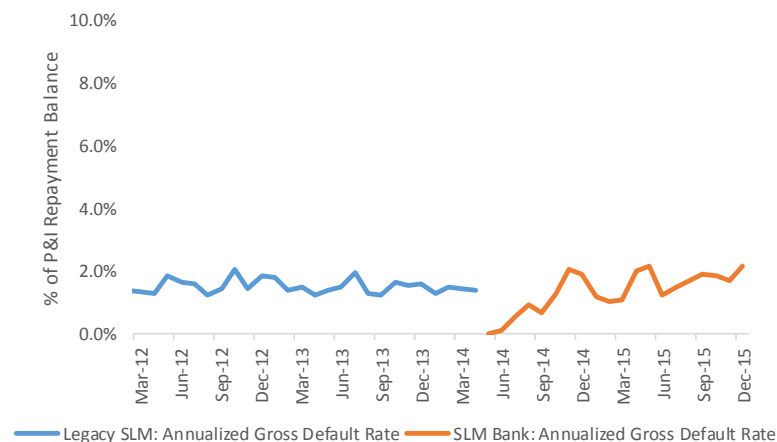
61-90 Day Delinquency



91+ Day Delinquency

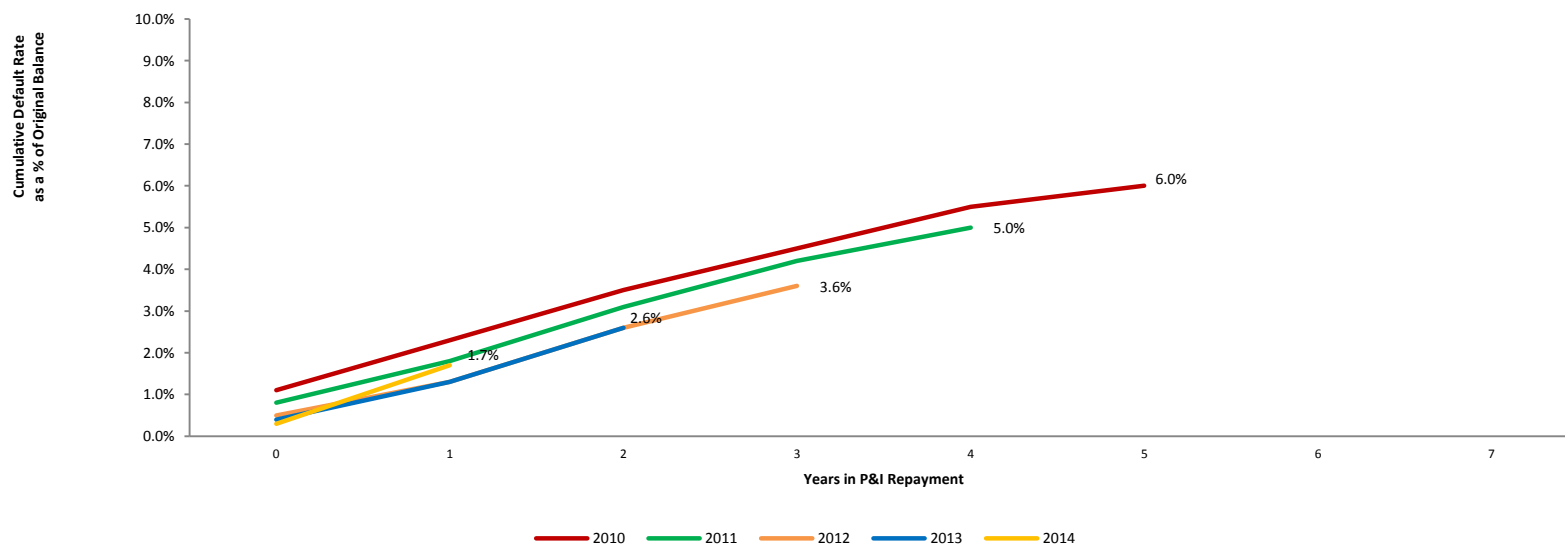


Annualized Gross Default Rate



Cumulative Defaults by P&I Repayment Vintage^{(10),(11),(12)}

Smart Option Cumulative Gross Defaults by P&I Repayment Vintage and Years in P&I Repayment



Conservative Funding Approach

Low cost deposit base with no branch overhead

- 80% of retail deposits are savings accounts
- Brokered deposits used as alternative funding source

Term funding / securitizations will augment deposit funding for future growth

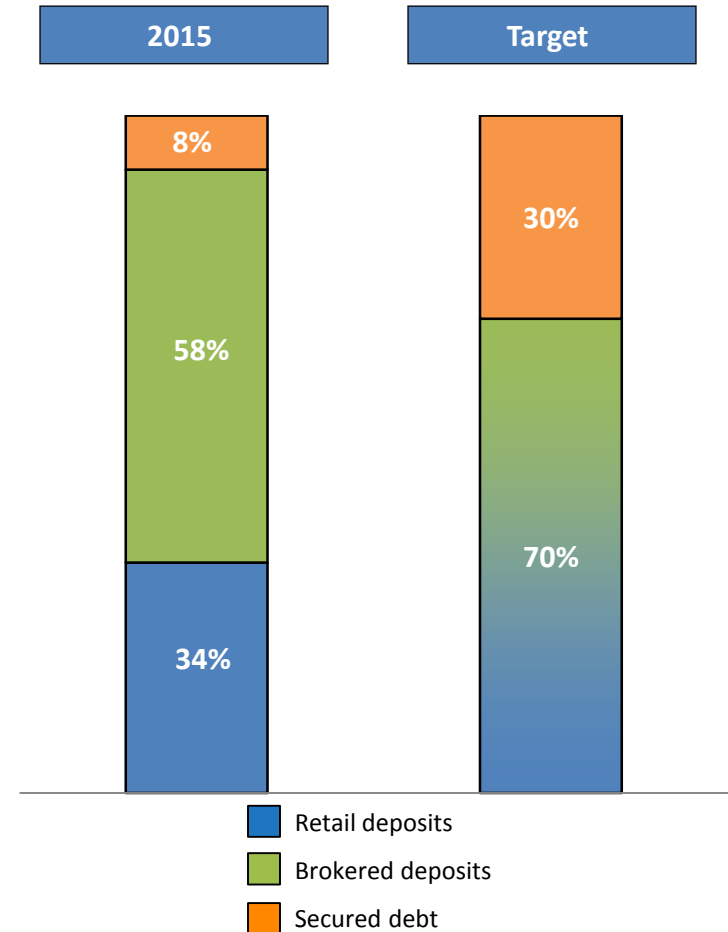
- Experienced capital markets team
- Capacity to securitize \$2 – \$3bn of private education loans
- Raised \$623 million of term funding in the third quarter 2015

Multi-year revolving conduit facility

- Provides seasonal loan funding and backup liquidity
- Multi-year \$750mm conduit provided by consortium of banks

Substantial liquidity portfolio

- \$2.4bn of on-balance sheet cash as of 12/31/15



Financial Review

(in millions)				Q4 2015	Q4 2014	Variance	2015	2014	Variance
Balance Sheet	PSL			\$ 10,624	\$ 8,325	\$ 2,299	\$ 10,624	\$ 8,325	\$ 2,299
	PSL Reserve			(109)	(79)	(30)	(109)	(79)	(30)
	FFELP			1,119	1,268	(150)	1,119	1,268	(150)
	FFELP Reserve			(4)	(5)	2	(4)	(5)	2
	Total Loans			11,631	9,510	2,121	11,631	9,510	2,121
	Cash			2,416	2,360	56	2,416	2,360	56
	All Other Assets			1,167	1,103	65	1,167	1,103	65
	Total Assets			15,214	12,972	2,242	15,214	12,972	2,242
	Brokered Deposits			7,324	6,733	591	7,324	6,733	591
	Retail Deposits			3,146	3,082	65	3,146	3,082	65
	Other Liabilities			2,648	1,328	1,320	2,648	1,328	1,320
	Equity			2,096	1,830	266	2,096	1,830	266
	Total Liabilities & Equity			\$ 15,214	\$ 12,972	\$ 2,242	\$ 15,214	\$ 12,972	\$ 2,242
	PSL Reserve % of Balance (Gross)			1.03%	0.95%	0.08%	1.03%	0.95%	0.08%
Income Statement	Interest Income			\$ 222	\$ 179	\$ 44	\$ 831	\$ 674	\$ 157
	Interest Expense			(35)	(28)	(7)	(129)	(96)	(33)
	Net Interest Income before Provision			188	151	37	702	578	124
	Provision			(30)	(30)	0	(90)	(85)	(5)
	NII After Provision			157	120	37	612	493	119
	Gain On Sale, net			58	0	58	135	121	14
	Fee Income			13	11	1	42	40	2
	Gain/(Loss) on Hedging Activities, net			1	1	0	5	(4)	9
	Total Expenses			(85)	(88)	4	(356)	(316)	(39)
	GAAP Pre-Tax Income			\$ 145	\$ 44	\$ 101	\$ 439	\$ 334	\$ 105
	Core Pre-Tax Income			\$ 144	\$ 44	\$ 100	\$ 437	\$ 335	\$ 102
	GAAP Net Income			\$ 90	\$ 20	\$ 70	\$ 274	\$ 194	\$ 80
	Core Earnings Adjustments			(0)	0	(0)	(1)	1	(2)
	Core Earnings Net Income			\$ 90	\$ 20	\$ 70	\$ 273	\$ 195	\$ 78
	Preferred Dividends			(5)	(5)	(0)	(20)	(13)	(7)
	GAAP Earnings Available			\$ 85	\$ 15	\$ 70	\$ 255	\$ 181	\$ 73
	Core Earnings Available			\$ 85	\$ 15	\$ 70	\$ 254	\$ 182	\$ 71
Metrics	ROA (Core)			2.5%	0.6%	1.9%	2.0%	1.7%	0.3%
	ROCE (Core)			22.5%	4.7%	17.8%	18.3%	15.2%	3.1%
	Total Risk Based Capital Ratio (Bank Only)			15.4%	15.9%	(0.5%)	15.4%	15.9%	(0.5%)
	CSEs			431	432	(1)	432	432	(0)
	Core Diluted EPS			\$0.20	\$0.03	\$0.16	\$0.59	\$0.42	\$0.16

- Private Education Loan portfolio growth of 28% in 2015 vs. 2014
- Conservatively funded with 15.4% risk based capital at the end of 2015
- Stable deposit base coupled with term funding from securitizations
- Full-year net interest margin of 5.48%
- ROCE (Core) and ROA (Core) in 2015 was 18% and 2%, respectively
- Diluted EPS growth of 40% for 2015 vs. 2014

2016 Guidance

- Full-year Diluted Core EPS: \$0.49 - \$0.51
- Full-year Private Education Loan Originations: \$4.6 billion
- Full-year Operating Efficiency Ratio Improvement: 8-10%

Sallie Mae Bank

- Market share leader in private student loan industry
- High quality assets and conservatively funded balance sheet
- Predictable balance sheet growth for the next several years
- Strong capital position and funding capabilities
- A financial services company with high growth trajectory and excellent return on equity

APPENDIX

“Core Earnings” to GAAP Reconciliation

	<u>Quarters Ended</u>		<u>Years Ended</u>	
	<u>December 31,</u>		<u>December 31,</u>	
	<u>2015</u>	<u>2014</u>	<u>2015</u>	<u>2014</u>
<u>(Dollars in thousands, except per share amounts)</u>				
“Core Earnings” adjustments to GAAP:				
GAAP net income attributable to SLM Corporation.....	\$ 89,845	\$ 19,717	\$ 274,284	\$ 194,219
Preferred stock dividends	4,989	4,855	19,595	12,933
GAAP net income attributable to SLM Corporation common stock.....	<u>\$ 84,856</u>	<u>\$ 14,862</u>	<u>\$ 254,689</u>	<u>\$ 181,286</u>
Adjustments:				
Net impact of derivative accounting ⁽¹⁵⁾	(348)	62	(1,849)	1,746
Net tax effect ⁽¹⁶⁾	(124)	24	(711)	659
Total “Core Earnings” adjustments to GAAP	<u>(224)</u>	<u>38</u>	<u>(1,138)</u>	<u>1,087</u>
“Core Earnings” attributable to SLM Corporation common stock.....	<u>\$ 84,632</u>	<u>\$ 14,900</u>	<u>\$ 253,551</u>	<u>\$ 182,373</u>
GAAP diluted earnings per common share				
	\$ 0.20	\$ 0.03	\$ 0.59	\$ 0.42
Derivative adjustments, net of tax				
	-	-	-	-
“Core Earnings” diluted earnings per common share	<u>\$ 0.20</u>	<u>\$ 0.03</u>	<u>\$ 0.59</u>	<u>\$ 0.42</u>

Footnotes

- (1) Source: MeasureOne CBA Report as of September 2015
- (2) GAAP net income attributable to SLM Corporation Common Stock
- (3) Source: U.S. Department of Education, National Center for Education Statistics, Projections of Education Statistics to 2022 (NCES, February 2014), Enrollment in Postsecondary Institutions
- (4) Source: Trends in College Pricing.© 2015 The College Board,. www.collegeboard.org, Note: Academic years, average published tuition, fees, room and board charges at four-year institutions; enrollment-weighted
- (5) Source: Total post-secondary education spend is estimated by Sallie Mae determining the full-time equivalents for both graduates and undergraduates and multiplying by the estimated total per person cost of attendance for each school type. In doing so, we utilize information from the US Department of Education, National Center for Education Statistics, Projections of Education Statistics to 2022 (NCES 2014-, February 2014), The Integrated Postsecondary Education Data System (IPEDS), College Board -Trends in Student Aid 2015. © 2015 The College Board. www.collegeboard.org, College Board -Trends in Student Pricing 2015. © 2015 The College Board. www.collegeboard.org, National Student Clearinghouse - Term Enrollment Estimates and Company Analysis. Other sources for these data points also exist publicly and may vary from our computed estimates. NCES, IPEDS, and College Board restate their data annually, which may cause previously reported results to vary. We have also restated figures in our Company Analysis to standardize all costs of attendance to dollars not adjusted for inflation. This has a minimal impact on historically-stated numbers.
- (6) Source: Trends in College Pricing.© 2015 The College Board, www.collegeboard.org, U.S. Department of Education 2015
- (7) Source: U.S. Bureau of Labor Statistics- September 2015
- (8) Source: PEW Research Center- The Rising Cost of Not Going to College February 2014
- (9) Source: Brown Center on Education Policy at Brookings: Is a Student Loan Crisis on the Horizon -Released June 2014
- (10) For important information regarding historical performance data, see pages 20 and 21.
- (11) Loans in 'P&I Repayment' include only those loans for which scheduled principal and interest payments are due. Legacy SLM portfolio serviced pursuant to a 212 day charge-off policy. Sallie Mae Bank portfolio serviced pursuant to a 120 day charge-off policy. Historical trends may not be indicative of future performance.
- (12) Delinquency and Default rates are calculated as a percentage of loans in principal and interest (P&I) repayment.
- (13) Loans in 'P&I Repayment' include only those loans for which scheduled principal and interest payments are due. Legacy SLM and Navient portfolio serviced pursuant to a 212 day charge-off policy. Sallie Mae Bank portfolio serviced pursuant to a 120 day charge-off policy. Historical trends may not be indicative of future performance.
- (14) Certain data used in the charts was provided by Navient under a data sharing agreement. Sallie Mae Bank has not independently verified, and is not able to verify, the accuracy or completeness of the data provided under the agreement.
- (15) Derivative Accounting: "Core Earnings" exclude periodic unrealized gains and losses caused by the mark-to-market valuations on derivatives that do not qualify for hedge accounting treatment under GAAP, as well as the periodic unrealized gains and losses that are a result of ineffectiveness recognized related to effective hedges under GAAP. Under GAAP, for our derivatives held to maturity, the cumulative net unrealized gain or loss over the life of the contract will equal \$0.
- (16) "Core Earnings" tax rate is based on the effective tax rate at the Bank where the derivative instruments are held.

Important Information Regarding Historical Loan Performance Data

On April 30, 2014 (the "Spin-Off Date"), the former SLM Corporation legally separated (the "Spin-Off") into two distinct publicly traded entities: an education loan management, servicing and asset recovery business called Navient Corporation ("Navient"), and a consumer banking business called SLM Corporation. SLM Corporation's primary operating subsidiary is Sallie Mae Bank. We sometimes refer to SLM Corporation, together with its subsidiaries and its affiliates, during the period prior to the Spin-Off as "legacy SLM."

In connection with the Spin-Off, all private education loans owned by legacy SLM, other than those owned by its Sallie Mae Bank subsidiary as of the date of the Spin-Off, and all private education loan asset-backed securities ("ABS") trusts previously sponsored and administered by legacy SLM were transferred to Navient. As of the Spin-Off Date, Navient and its sponsored ABS trusts owned \$30.8 billion of legacy SLM's private education loan portfolio originated both prior to and since 2009. As of the Spin-Off Date, Sallie Mae Bank owned \$7.2 billion of private education loans, the vast majority of which were unencumbered Smart Option Student Loans originated since 2009.

Legacy SLM's Private Education Loan and ABS Programs Prior to the Spin-Off

In 1989, legacy SLM began making private education loans to graduate students. In 1996, legacy SLM expanded its private education loan offerings to undergraduate students. Between 2002 and 2007, legacy SLM issued \$18.6 billion of private education loan-backed ABS in 12 separate transactions.

In 2008, in response to the financial downturn, legacy SLM revised its private education loan underwriting criteria, tightened its forbearance and collections policies, ended direct-to-consumer disbursements, and ceased lending to students attending certain for-profit schools. Legacy SLM issued no private education loan ABS in 2008.

In 2009, legacy SLM introduced its Smart Option Student Loan product and began underwriting private education loans with a proprietary custom credit score. The custom credit score included income-based factors, which led to a significant increase in the percentage of loans requiring a co-signer, typically a parent. The initial loans originated under the Smart Option Student Loan program (the "Interest Only SOSLs") were variable rate loans and required interest payments by borrowers while in school, which reduced the amounts payable over the loans' lives and helped establish repayment habits among borrowers. In 2010, legacy SLM introduced a second option for its Smart Option Student Loan customers, which required a \$25 fixed monthly payment while borrowers were in school (the "Fixed Pay SOSLs"). In 2011, legacy SLM introduced another option for its Smart Option Student Loan customers, which allowed borrowers to defer interest and principal payments until after a student graduates or separates from school (the "Deferred SOSLs"). In 2012, legacy SLM introduced a fixed rate loan option for its Interest Only, Fixed Pay and Deferred SOSLs. Borrowers must select which of these options they prefer at the time of loan origination and are not permitted to change those options once selected.

In 2011, legacy SLM included private education loans originated under the Smart Option Student Loan program in its ABS pools for the first time. Between 2011 and 2014, the mix of Smart Option Student Loans included in legacy SLM's private education loan ABS steadily increased as a percentage of the collateral pools, from 10% initially to 64% in later transactions.

Sallie Mae Bank's Private Education Loan and ABS Programs Post-Spin Off

Originations. Following the Spin-Off, Sallie Mae Bank continued to originate loans under the Smart Option Student Loan program. As of December 31, 2015, it owned \$10.5 billion of private education loans, the vast majority of which were Smart Option Student Loans originated since 2009, and three-fourths of which were originated between 2013 and 2015. Navient ceased originating private education loans following the Spin-Off.

Servicing. Immediately prior to the Spin-Off, Sallie Mae Bank assumed responsibility for collections of delinquent loans on the vast majority of its Smart Option Student Loan portfolio. Following the Spin-Off Date, Navient continued to service all private education loans owned by the two companies on its servicing platform until October 2014, when servicing for the vast majority of Sallie Mae Bank's private education loan portfolio was transitioned to Sallie Mae Bank. Sallie Mae Bank now services and is responsible for collecting the vast majority of the Smart Option Student Loans it owns.

Securitization and Sales. In August 2014, Sallie Mae Bank sponsored its first private education loan ABS, SMB Private Education Loan Trust 2014-A (the "SMB 2014-A transaction"). Because this transaction occurred prior to the transfer of loan servicing from Navient to Sallie Mae Bank, Sallie Mae Bank acted as master servicer for the transaction and Navient as subservicer, and the loan pool is serviced pursuant to Navient servicing policies. In April 2015, Sallie Mae Bank sponsored a second securitization and residual sale, SMB Private Education Loan Trust 2015-A. In July 2015, Sallie Mae Bank sponsored its first on-balance sheet term securitization, SMB Private Education Loan Trust 2015-B. In October 2015, Sallie Mae Bank sponsored another securitization and residual sale, SMB Private Education Loan Trust 2015-C. Sallie Mae Bank services the loans in all of the securitizations it has sponsored following the SMB 2014-A transaction.

Additional Information. Prior to the Spin-Off, all Smart Option Student Loans were originated and initially held by Sallie Mae Bank, as a subsidiary of legacy SLM. Sallie Mae Bank typically then sold certain of the performing Smart Option Student Loans to an affiliate of legacy SLM for securitization. Additionally, on a monthly basis Sallie Mae Bank sold all loans that were over 90 days past due, in forbearance, restructured or involved in a bankruptcy to an affiliate of legacy SLM. As a result of this second practice, prior to the occurrence of the Spin-Off, historical performance data for Sallie Mae Bank's Smart Option Student Loan portfolio reflected minimal later stage delinquencies, forbearance or charge-offs.

Legacy SLM collected Smart Option Student Loans pursuant to policies that required loans be charged off after 212 days of delinquency. In April 2014, Sallie Mae Bank began collecting the vast majority of its Smart Option Student Loans pursuant to policies that required loans be charged off after 120 days of delinquency, in accordance with bank regulatory guidance. As a result of the various policies described above, it was not until recently that (a) a meaningful amount of Smart Option Student Loan charge-offs occurred in Sallie Mae Bank's portfolio, and (b) performance data on Sallie Mae Bank's owned Smart Option Student Loan portfolio became useful as a basis for evaluating historical trends for Smart Option Student Loans. For the reasons described above, much of Sallie Mae Bank's historical performance data does not reflect current collections and charge off practices and may not be indicative of the future performance of the Bank's Smart Option Student Loans. We do not believe the credit performance indicators for Sallie Mae Bank-owned and -serviced Smart Option Student Loans yet provide meaningful period-over-period comparisons.

Important Information Regarding Historical Loan Performance Data (cont.)

Types of Smart Option Loan Portfolio Data

The portfolio data we used in this report comes from three separate sources of information:

(1) Combined Smart Option Student Loan Portfolio Data for Legacy SLM, Navient and Sallie Mae Bank. Information in this category is presented on a combined basis for loans originated under the Smart Option Student Loan program, whether originated by Sallie Mae Bank when it was part of legacy SLM or by Sallie Mae Bank post Spin-Off, and regardless of whether the loan is currently held by an ABS trust, or held or serviced by Navient or Sallie Mae Bank. Data in this category is used in the tables below under the following headings:

- “Cumulative Defaults by P&I Repayment Vintage and Years in P&I Repayment”

This combined Smart Option Student Loan portfolio data provides insight into gross defaults of all Smart Option Student Loans since 2010, regardless of ownership or servicing standard. We believe historical loan performance data since 2010 is more representative of the expected performance of Smart Option Student Loans to be included in new Sallie Mae Bank trusts than data available for earlier periods. Data available for earlier periods includes a limited number of Smart Option Student Loan product types, a limited amount of loans in principal and interest repayment status, and limited periods of loan performance history.

Loans contained in the combined Smart Option Student Loan portfolio category were serviced by legacy SLM prior to the Spin-Off, and by either Navient or Sallie Mae Bank after the Spin-Off. As noted above, loans serviced by legacy SLM and Navient were serviced pursuant to different policies than those loans serviced by Sallie Mae Bank after the Spin-Off. Specifically, legacy SLM charged off loans after 212 days of delinquency, and Navient has continued this policy. Sallie Mae Bank currently charges off loans after 120 days of delinquency. All loans included in the combined Smart Option Student Loan portfolio were serviced by legacy SLM pursuant to a 212-day charge off policy prior to the Spin-Off. Following the Spin-Off, a portion of the loans included in the combined Smart Option Student Loan portfolio data have been serviced by Navient pursuant to a 212-day charge off policy, and a portion have been serviced by Sallie Mae Bank pursuant to a 120-day charge off policy. As a result, future performance of loans serviced by Sallie Mae Bank may differ from the historical performance of loans reflected in this combined Smart Option Student Loan portfolio data.

(2) Legacy SLM Consolidated Smart Option Student Loan Portfolio Data prior to the Spin-Off Date, and Sallie Mae Bank-Only Smart Option Student Loan Data from and after the Spin-Off Date. Information in this category is presented (a) prior to the Spin-Off Date for Smart Option Student Loans owned or serviced by legacy SLM prior to the Spin-Off, and (b) from and after the Spin-Off Date for Smart Option Student Loans serviced by Sallie Mae Bank from and after the Spin-Off. Data in this category is used in the tables below under the following headings:

- “31-60 Day Delinquencies as a Percentage of Loans in P&I Repayment;”
- “61-90 Day Delinquencies as a Percentage of Loans in P&I Repayment;”
- “91-plus Day Delinquencies as a Percentage of Loans in P&I Repayment;”
- “Forbearance as a Percentage of Loans in P&I Repayment and Forbearance;”
- “Annualized Gross Defaults as a Percentage of Loans in P&I Repayment;”
- “Voluntary Constant Prepayment Rates by Origination Vintage and Product;” and
- “Total Constant Prepayment Rates by Origination Vintage and Product.”

This consolidated Smart Option Student Loan portfolio data provides insight into historical delinquencies, forbearance, defaults and prepayment rates specifically of the Smart Option Student Loans covered, regardless of the loans’ ownership at the time, or whether the loans serve as collateral for an ABS trust. We believe this data is currently the most relevant data available for assessing historical Smart Option Student Loan performance.

Loans owned or serviced by legacy SLM and contained in this consolidated Smart Option Student Loan portfolio category were serviced pursuant to legacy SLM servicing policies prior to the Spin-Off. Loans serviced by Sallie Mae Bank and contained in this consolidated Smart Option Student Loan portfolio were serviced pursuant to Sallie Mae Bank servicing policies since the Spin-Off. The servicing policies of legacy SLM were different than the servicing policies of Sallie Mae Bank. Specifically, legacy SLM charged off loans after 212 days of delinquency, while Sallie Mae Bank charges off loans after 120 days of delinquency in accordance with bank regulatory guidance. As a result, future performance of loans serviced by Sallie Mae Bank may differ from the historical performance of loans reflected in this consolidated Smart Option Student Loan portfolio data.

(3) Legacy SLM Consolidated Smart Option Student Loan Portfolio Data prior to the Spin-Off Date, and Navient-Only Smart Option Student Loan Data from and after the Spin-Off Date. Information in this category is presented (a) prior to the Spin-Off Date for Smart Option Student Loans owned or serviced by legacy SLM prior to the Spin-Off, and (b) from and after the Spin-Off Date for Smart Option Student Loans serviced by Navient from and after the Spin-Off. Data in this category is used in the tables below under the following headings:

- “Smart Option Loan Cumulative Recovery Rate”

Loans contained in this Smart Option Student Loan portfolio category were serviced by legacy SLM prior to the Spin-Off, and by Navient after the Spin-Off. As noted above, loans serviced by legacy SLM and Navient were serviced pursuant to different policies than those loans serviced by Sallie Mae Bank after the Spin-Off. Specifically, legacy SLM charged off loans after 212 days of delinquency, and Navient has continued this policy. Sallie Mae Bank currently charges off loans after 120 days of delinquency. As a result, future performance of loans serviced by Sallie Mae Bank may differ from the historical performance of loans reflected in this Smart Option Student Loan portfolio data.

Any data or other information presented in the following report is for comparative purposes only, and, is not to be deemed a part of any offering of securities.

A significant portion of the Smart Option Student Loan performance data described above is provided to Sallie Mae Bank by Navient under a data sharing agreement executed in connection with the Spin-Off. This data sharing agreement expires in 2019. Under the data sharing agreement, Navient makes no representations or warranties to Sallie Mae Bank concerning the accuracy and completeness of information that it provided. Sallie Mae Bank has not independently verified, and is not able to verify, the accuracy or completeness of the data provided under the agreement.